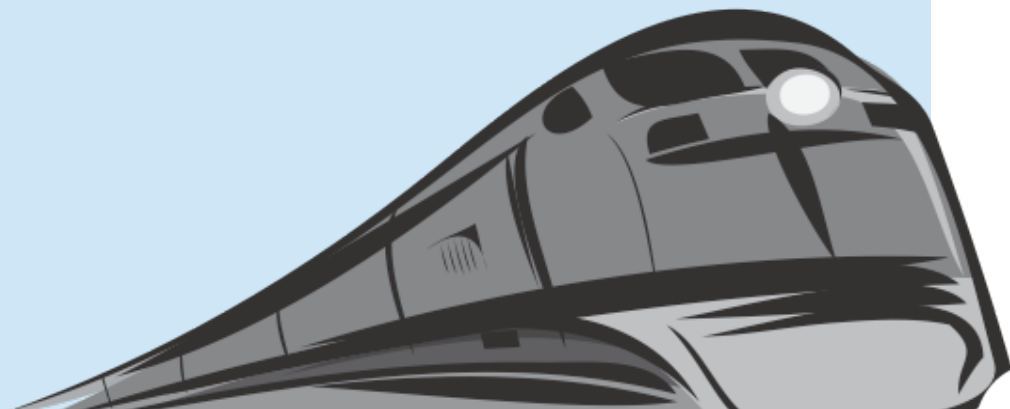


Environmental Analysis



POTENTIAL ENVIRONMENTAL IMPACTS: DOUBLE TRACK 3rd STREET

Socio-Economic Factors	<ul style="list-style-type: none"> • Residential displacements • Commercial displacements • Low-income and minority populations present
Historic Sites (National Register Listed or Eligible) <i>* Represents various homes throughout the neighborhood</i>	<ul style="list-style-type: none"> • Dana-Thomas House • H.P. Boulton House • Hickox Apartments • Central Springfield District • Enos Park Neighborhood * • Lincoln Park Neighborhood * • Near South Neighborhood * • Aristocracy Hill Neighborhood*
Noise & Vibration Sensitive Receptors	<ul style="list-style-type: none"> • Historic Sites (listed above) • Memorial Hospital • St. John's Hospital
Special Waste Sites	<ul style="list-style-type: none"> • No National Priority Listed sites identified • 12 Leaking Underground Storage Tank sites identified
Special Lands (Parks & Nature Preserves)	<ul style="list-style-type: none"> • 11th & Black Park (No right-of-way anticipated)
Endangered & Threatened Species	<ul style="list-style-type: none"> • No impacts to Endangered or Threatened species anticipated
Water Quality (Streams & Wetlands)	<ul style="list-style-type: none"> • No impacts to streams or wetlands anticipated

POTENTIAL ENVIRONMENTAL IMPACTS: SHIFT 3rd STREET TO 10TH STREET

Socio-Economic Factors	<ul style="list-style-type: none"> • Residential displacements • Commercial displacements • Low-income and minority populations present • Adverse travel at street closures
Historic Sites (National Register Listed or Eligible) <i>* Represents various homes throughout the neighborhood</i>	<ul style="list-style-type: none"> • Lincoln Home Site • Lincoln Colored Home • Old Town Theater • Sacred Heart Church • Lincoln Depot • Pillsbury Mills Neighborhood * • Pioneer Park Neighborhood * • Harvard Park Neighborhood*
Noise & Vibration Sensitive Receptors	<ul style="list-style-type: none"> • Historic Sites (listed above) • St. John's Hospital
Special Waste Sites	<ul style="list-style-type: none"> • No National Priority Listed sites identified • 14 Leaking Underground Storage Tank sites identified
Special Lands (Parks & Nature Preserves)	<ul style="list-style-type: none"> • 11th & Black Park (No right-of-way anticipated) • Iles Park (No right-of-way anticipated)
Endangered & Threatened Species	<ul style="list-style-type: none"> • No impacts to Endangered or Threatened species anticipated
Water Quality (Streams & Wetlands)	<ul style="list-style-type: none"> • No impacts to streams or wetlands anticipated

POTENTIAL ENVIRONMENTAL IMPACTS: SHIFT 3RD AND 19TH TO 10TH STREET

Socio-Economic Factors	<ul style="list-style-type: none"> • Residential displacements • Commercial displacements • Low-income and minority populations present • Adverse travel at street closures
Historic Sites (National Register Listed or Eligible) <i>* Represents various homes throughout the neighborhood</i>	<ul style="list-style-type: none"> • Lincoln Home Site • Lincoln Colored Home • Old Town Theater • Sacred Heart Church • Lincoln Depot • Pillsbury Mills Neighborhood * • Pioneer Park Neighborhood * • Harvard Park Neighborhood*
Noise & Vibration Sensitive Receptors	<ul style="list-style-type: none"> • Historic Sites (listed above) • St. John's Hospital
Special Waste Sites	<ul style="list-style-type: none"> • No National Priority Listed sites identified • 14 Leaking Underground Storage Tank sites identified
Special Lands (Parks & Nature Preserves)	<ul style="list-style-type: none"> • 11th & Black Park (No right-of-way anticipated) • Iles Park (No right-of-way anticipated)
Endangered & Threatened Species	<ul style="list-style-type: none"> • No impacts to Endangered or Threatened species anticipated
Water Quality (Streams & Wetlands)	<ul style="list-style-type: none"> • No impacts to streams or wetlands anticipated