



STATION 1: PROJECT INFORMATION

Provides an overview of the project's purpose, study team, participants, history, focus areas and boundaries



STUDY DESCRIPTION

Corridor Study:

- **Addresses how best to accommodate increasing freight and passenger rail traffic through Springfield, following detailed federal guidelines.**
- **Is not High Speed Rail Project from Chicago to St Louis**
- **Is sponsored by City of Springfield and Sangamon County and funded by Illinois Department of Transportation**



STUDY DESCRIPTION

Corridor Study:

- **Assesses possible environmental, social and economic impacts of different alternatives for managing increasing rail traffic**
- **Will recommend a preferred alternative to Federal Railroad Administration**
- **Enables state and local agencies to apply for funding to finance selected alternative's final design and land acquisition**

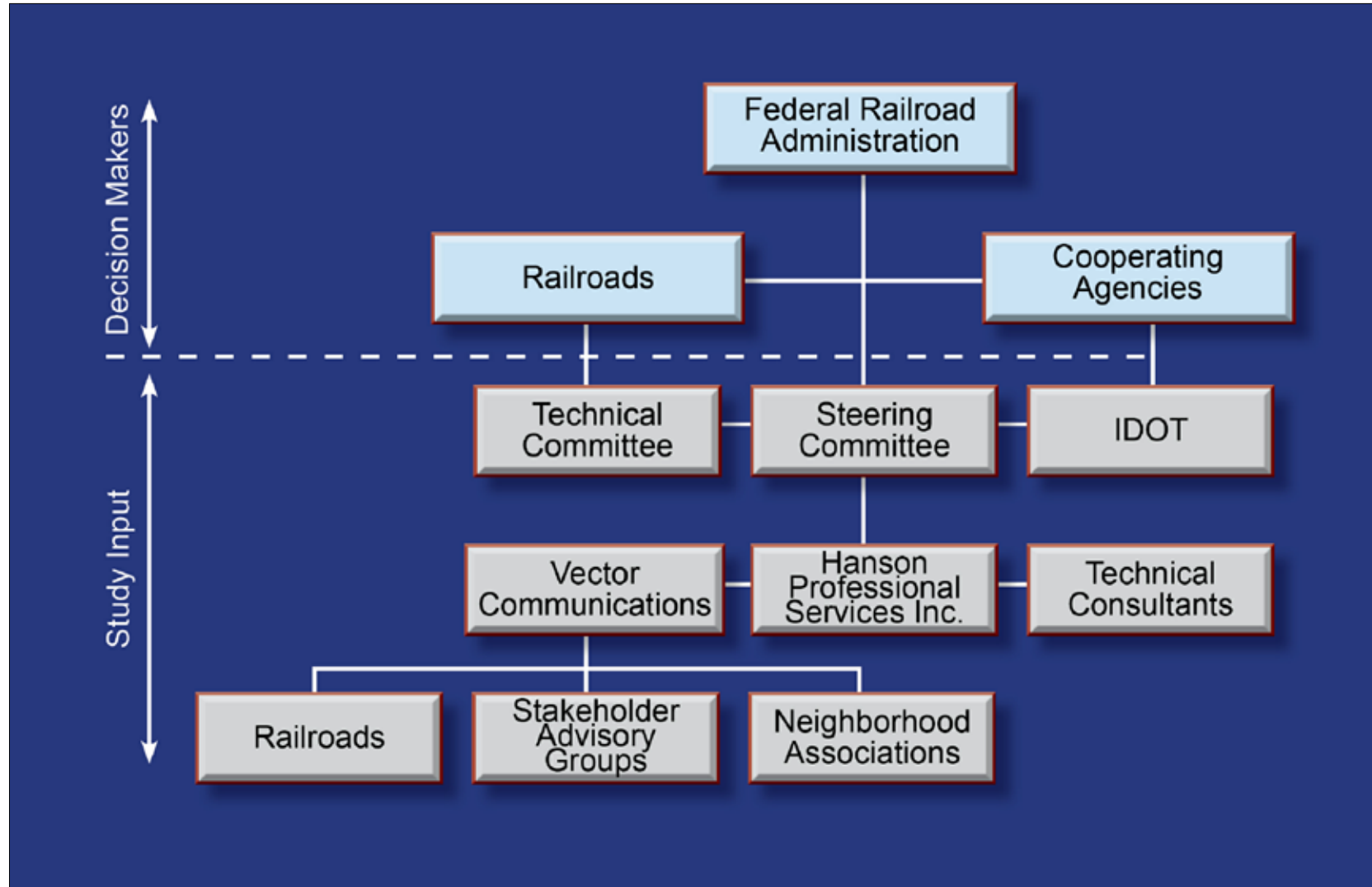


STUDY TEAM





STUDY PARTICIPANTS





HISTORY

1800's – Early 1900's

- Springfield develops around its rail lines

1920s

- City begins studying rail line consolidation

1970's & 1980's

- IL forms Capital City Railroad Association Authority to evaluate alternatives. Part of 1983 alternative is constructed

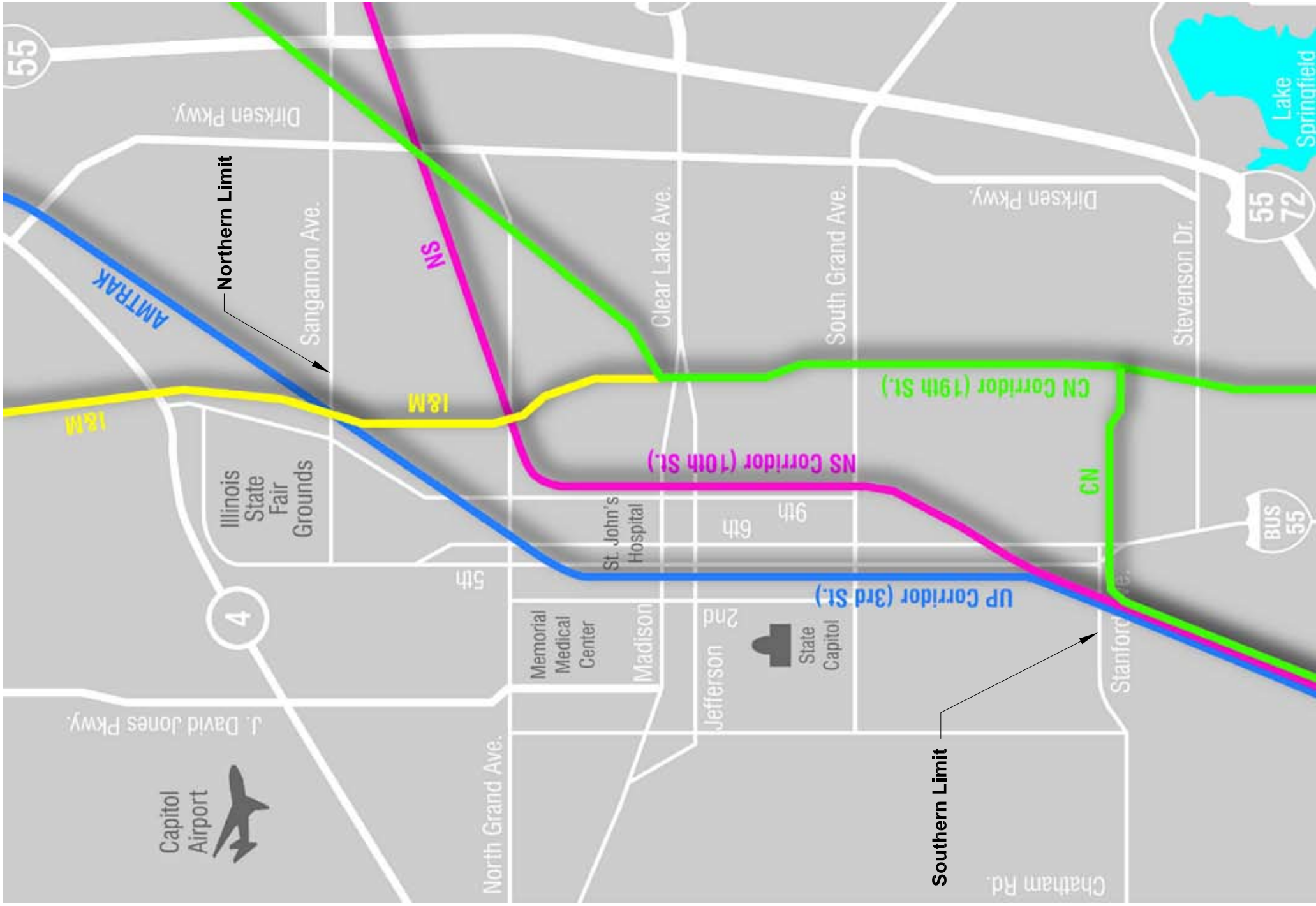
2003-2005

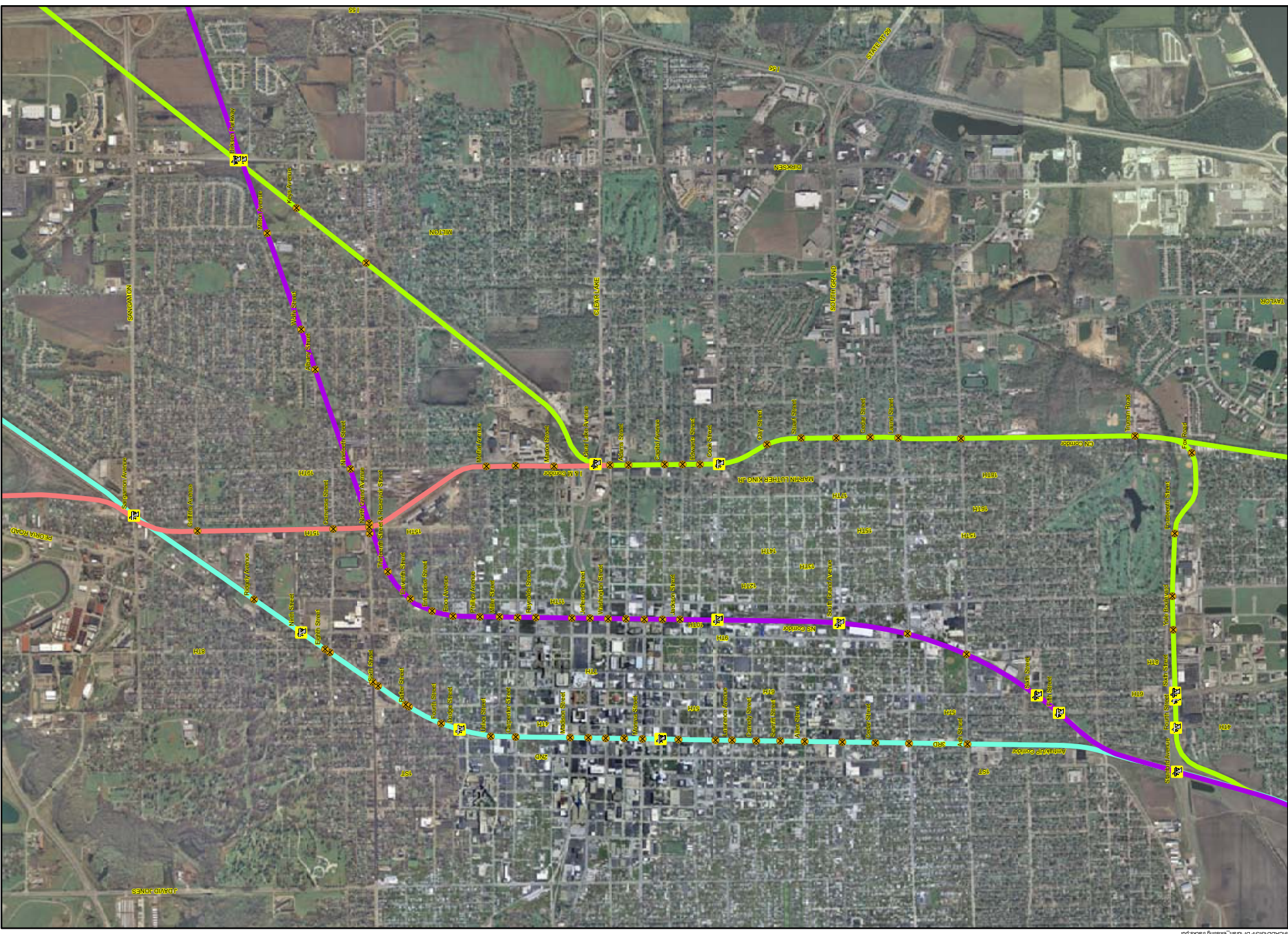
- Hanson completes consolidation study
 - Suggests R/UDAT
 - Only considers existing rail traffic
 - Assesses feasibility of consolidation
 - Evaluates 3 corridors and recommends 10th Street

2009

- IL applied for funding for High Speed Rail (state awarded \$1.2 billion in 2010)

CORRIDOR MAP





LEGEND

- Amtrak/UP
- NS
- CN/IC
- I & M
- Grade Separation
- Railroad Crossing
- School
- Park
- Important Landmarks
- Hospital
- Ambulance Facility
- Fire Station



EXISTING TRACKS

SPRINGFIELD RAILROAD CORRIDOR STUDY
 SPRINGFIELD, SANGAMON COUNTY, ILLINOIS



PROJECT NO. 09L0179

FIGURE NO. 1

1:\09\09L0179\CADD\GIS\Projects\existing_tracks.mxd
 p:\09\09L0179\CADD\GIS\Projects\Location\09L0179\CADD\GIS\Project\existing_tracks.pdf