



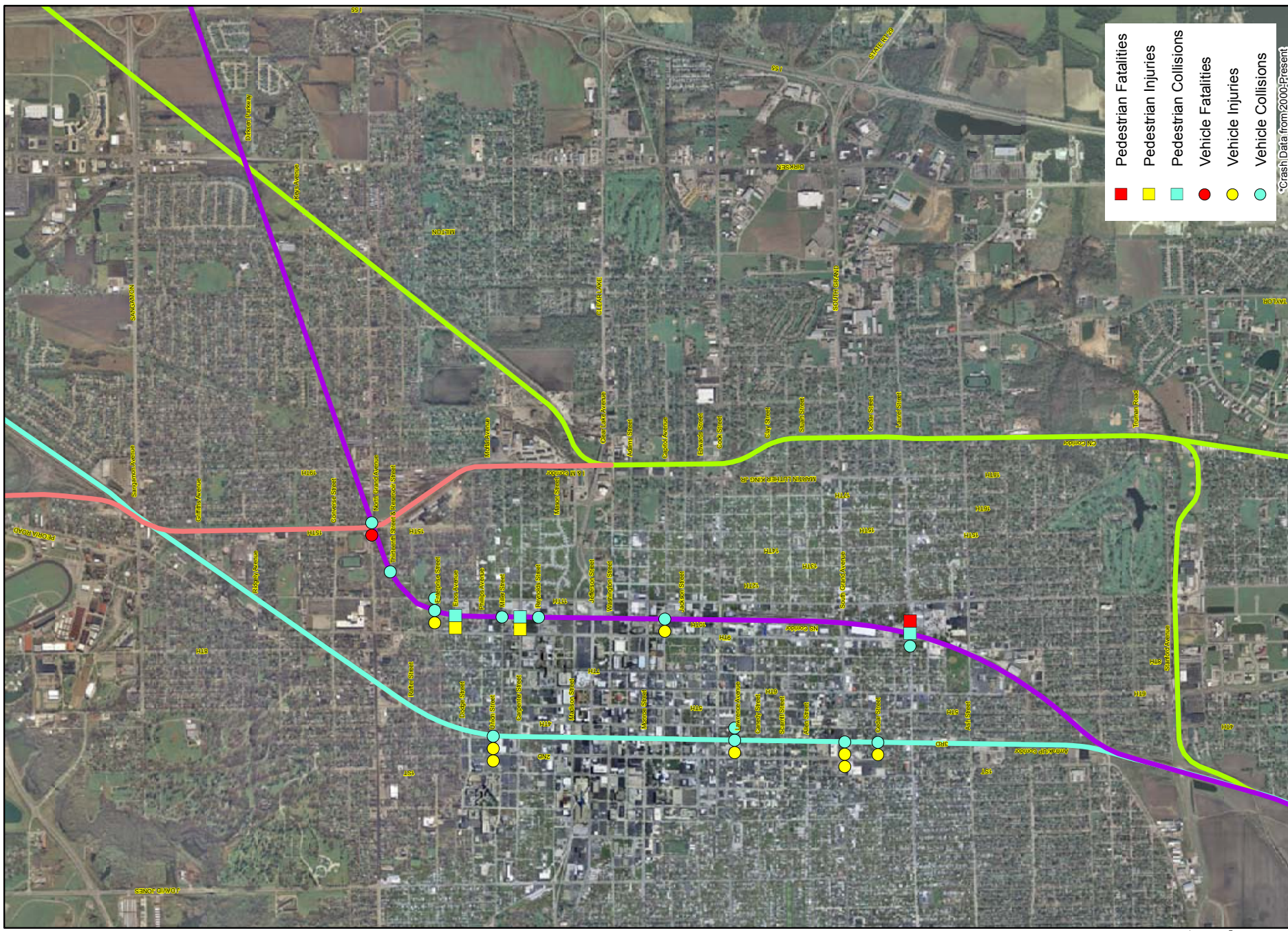
STATION 3: RAILROAD SAFETY

Examines safety hazards
associated with railroad crossings
and reviews resulting accidents,
injuries and fatalities



NATIONWIDE AT-GRADE STATISTICS (2009)

- **Illinois - 2nd highest number of grade crossings**
- **Illinois - 3rd highest number of collisions at grade crossings**
- **Illinois - 3rd highest number of fatalities at grade crossings**
- **Illinois - 6th highest number of trespasser fatalities**



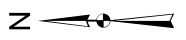
Crash Data from 2000-Present

CAR-PEDESTRIAN/TRAIN CRASHES

SPRINGFIELD RAILROAD CORRIDOR STUDY
 SPRINGFIELD, SANGAMON COUNTY, ILLINOIS

PROJECT NO. 09L0179 FIGURE NO. 1

HANSON
 Hanson Professional Services Inc.
 1525 South Sixth Street
 Springfield, Illinois 62704
 Registration No. 184-00 1084



LEGEND

- | | | |
|----------|-------------------|---------------------|
| AmtrakUP | Grade Separation | Important Landmarks |
| NS | Railroad Crossing | Hospital |
| CNVIC | School | Ambulance Facility |
| I & M | Park | Fire Station |
- 0 0.25 0.5 1 Miles

11909a09L0179ACDGISProjectRailroad accidents.mxd 11/17/2010 11:51:11 AM



HIGHWAY-RAILROAD AT GRADE CROSSING HAZARDOUS INTERSECTIONS

- **Freight trains do not always travel on a predictable schedule**
- **A loaded train can weigh 6,000 tons, a car weighs about 2 tons**
- **A train can need more than a mile to stop**
- **A train can extend 3 feet or more outside of the rails**
- **Trains are pushed or pulled in either direction at any time**
- **Some motorists or pedestrians try to beat the train**



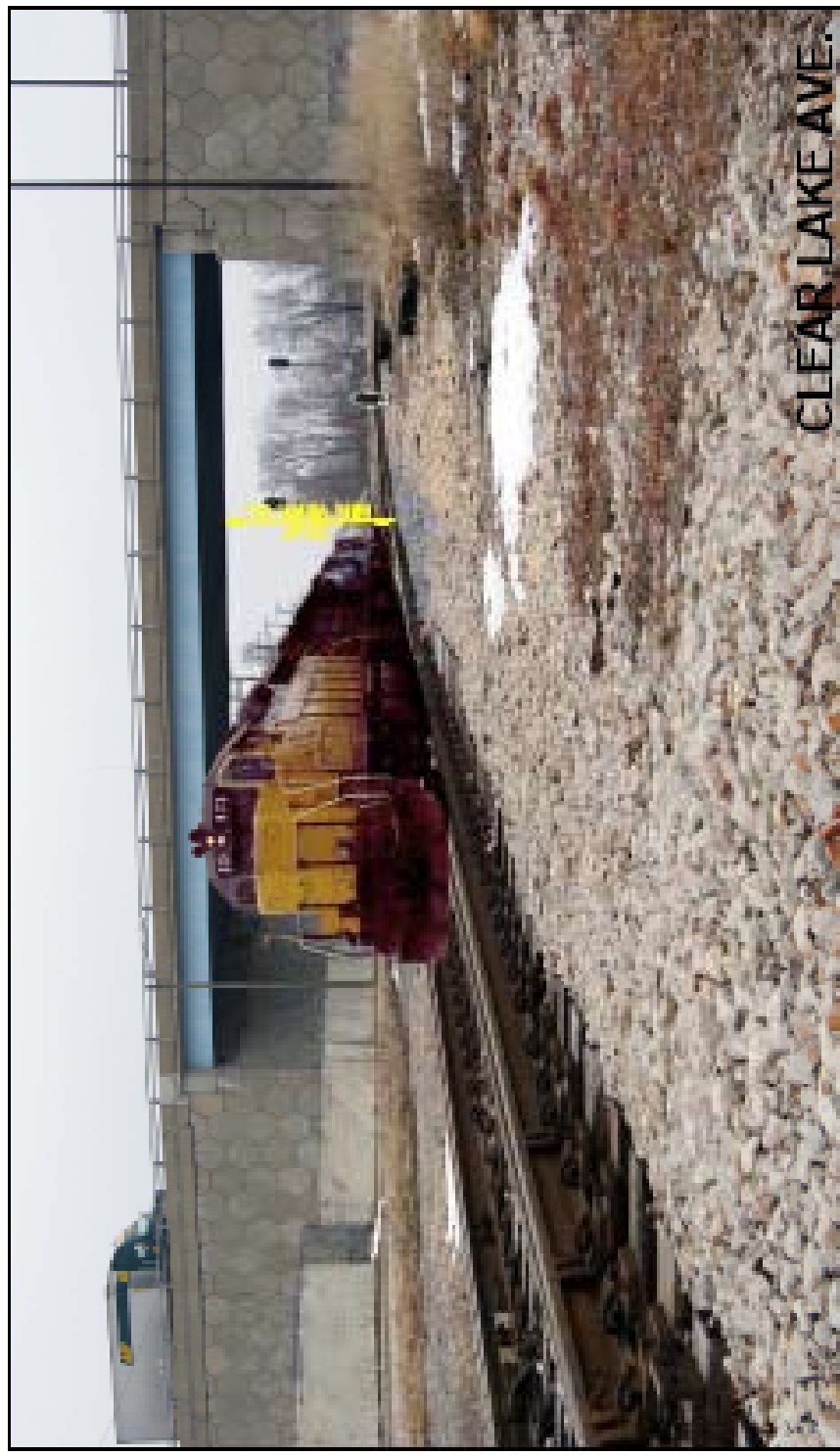
BENEFITS OF GRADE SEPARATIONS

- **Eliminate train / vehicle collisions**
- **Reduce vehicle delay times**
- **Reduce vehicle fuel consumption and emissions**
- **Maintain emergency access**
- **Eliminate train horn noise**

GRADE SEPARATIONS

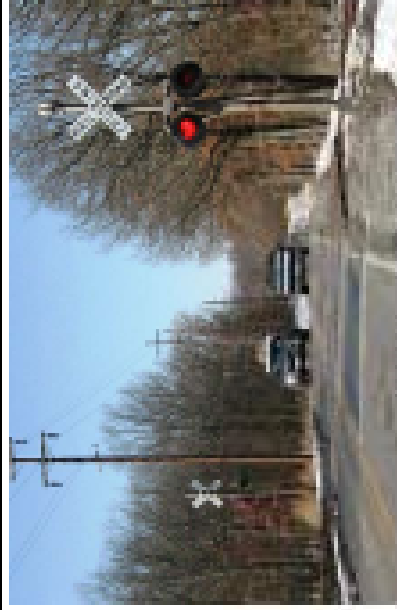


UNDERPASS: A SECTION OF A ROAD THAT PASSES UNDER ANOTHER ROAD OR RAILWAY LINE



OVERPASS: A SECTION OF ROAD OR A BRIDGE THAT CROSSES OVER ANOTHER ROAD OR RAILWAY LINE

TRAFFIC CONTROLS AT GRADE CROSSINGS



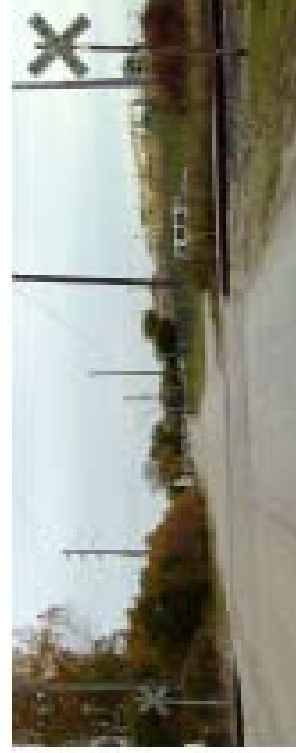
FLASHING LIGHTS



CANTILEVERED FLASHING LIGHTS



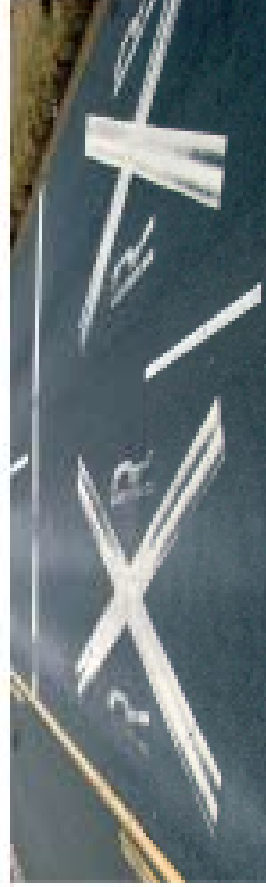
GATE WITH FLASHING LIGHTS



CROSS SIGN



CANTILEVERED FLASHING LIGHTS AND GATE



PAINTED PAVEMENT MARKING

