



STATION 4: TRAFFIC STUDIES

Reviews the expected increases
in passenger and freight train traffic
and explores the likely delays
for vehicle traffic



TRAIN TRAFFIC

	Current 2010 traffic	Projected 2020 traffic
Union Pacific	<ul style="list-style-type: none">● 10 Passenger● 5 Freight	<ul style="list-style-type: none">● 18 Passenger● 22 Freight
Norfolk Southern	<ul style="list-style-type: none">● 16 Freight	<ul style="list-style-type: none">● 24 Freight
Canadian National	<ul style="list-style-type: none">● 4 Freight	<ul style="list-style-type: none">● 8 Freight
TOTAL	<ul style="list-style-type: none">● 35 Trains	<ul style="list-style-type: none">● 72 Trains

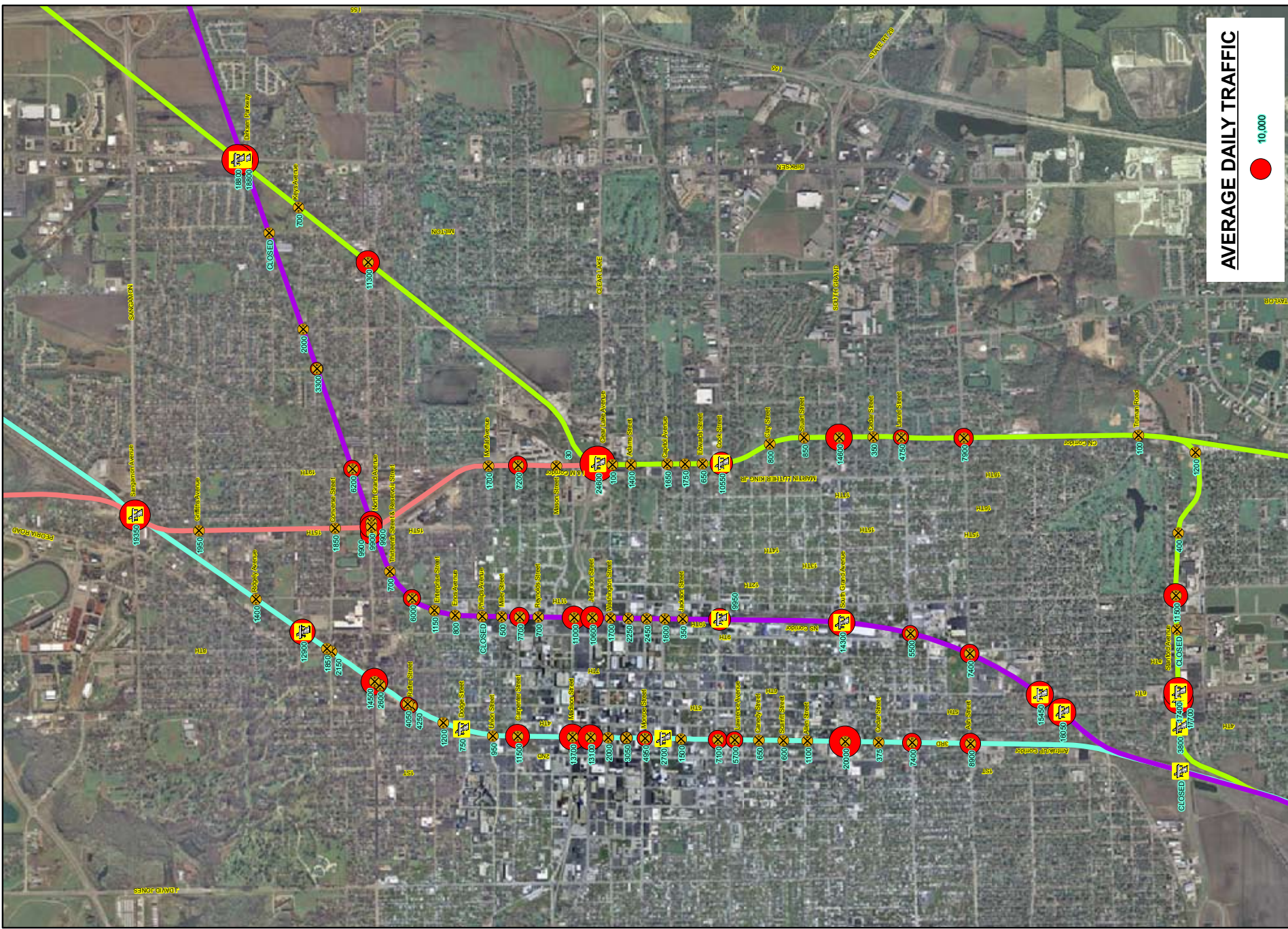
Note: Projection Based on Current Traffic and Information Provided by Railroads



VEHICLE TRAFFIC PER RAILROAD

- **Union Pacific - 130,300 vehicles**
- **Norfolk Southern - 81,800 vehicles**
- **Canadian National - 60,000 vehicles**
- **Illinois and Midland - 22,600 vehicles**

Total = 294,700 vehicles per day



AVERAGE DAILY TRAFFIC

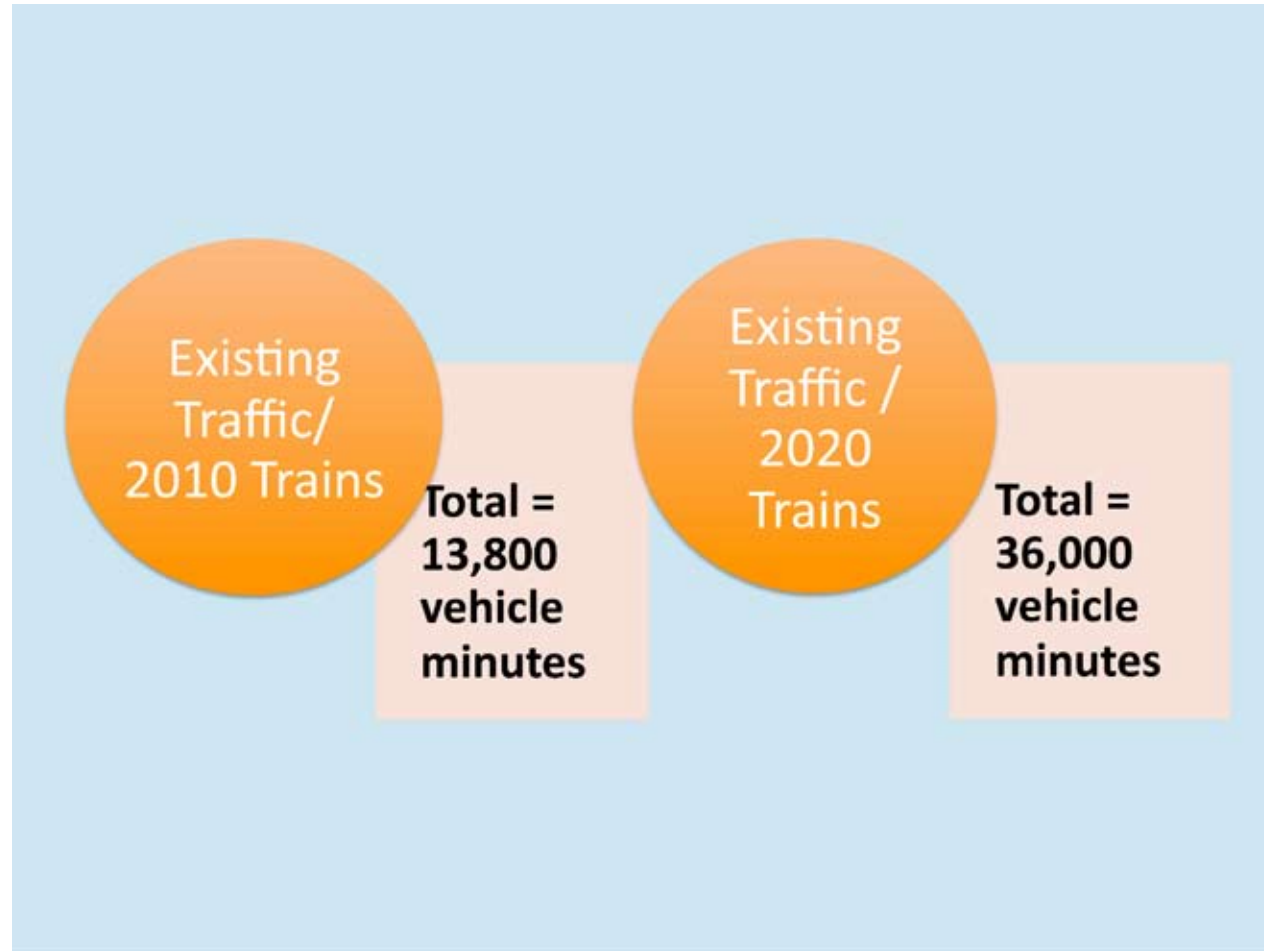
● 10,000

<p>LEGEND</p> <ul style="list-style-type: none"> Amtrak/LUP NS CNM/C I & M Grate Separation Railroad Crossing School Park Important Landmarks Hospital Ambulance Facility Fire Station 	<p>AVERAGE DAILY TRAFFIC</p> <p>SPRINGFIELD RAILROAD CORRIDOR STUDY SPRINGFIELD, SANGAMON COUNTY, ILLINOIS</p>
<p>HANSON Hanson Professional Services Inc. 1525 South Sixth Street Springfield, Illinois 62707 Registration No. 184-001084</p>	<p>PROJECT NO. 09L0179 FIGURE NO. 1</p>

110936109L0179CADSIPriProjRptAverage Daily Traffic.mxd 11/11/2011 11:32 AM Project: D:\hanson\09L0179\CAD\GIS\PRiJ\Ave Daily Traffic.mxd



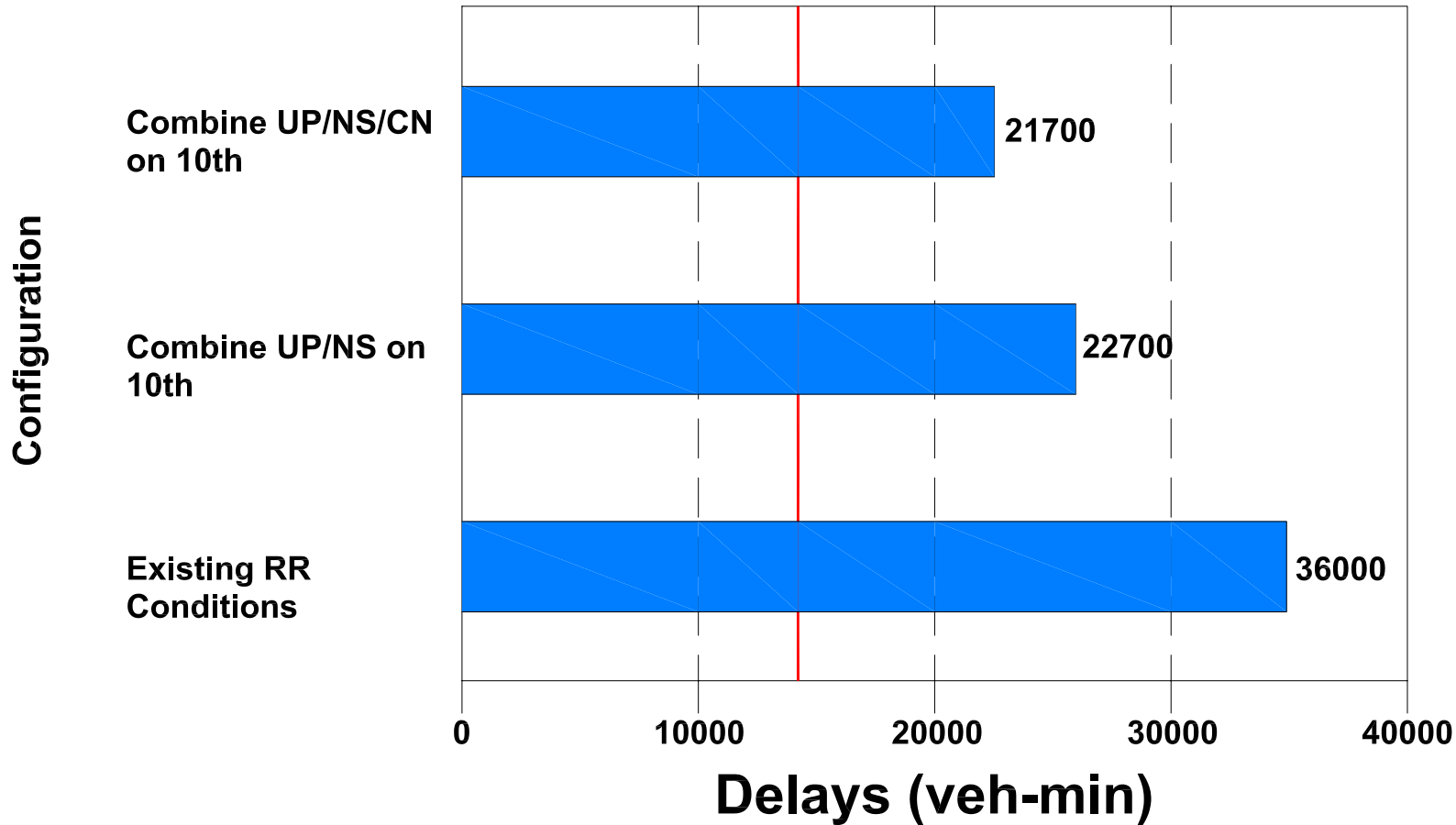
VEHICLE DELAYS AT RAILROAD CROSSINGS





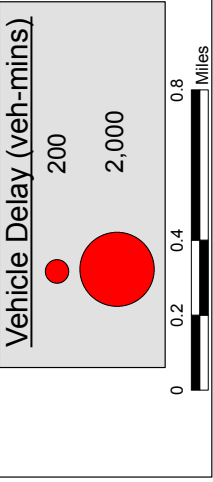
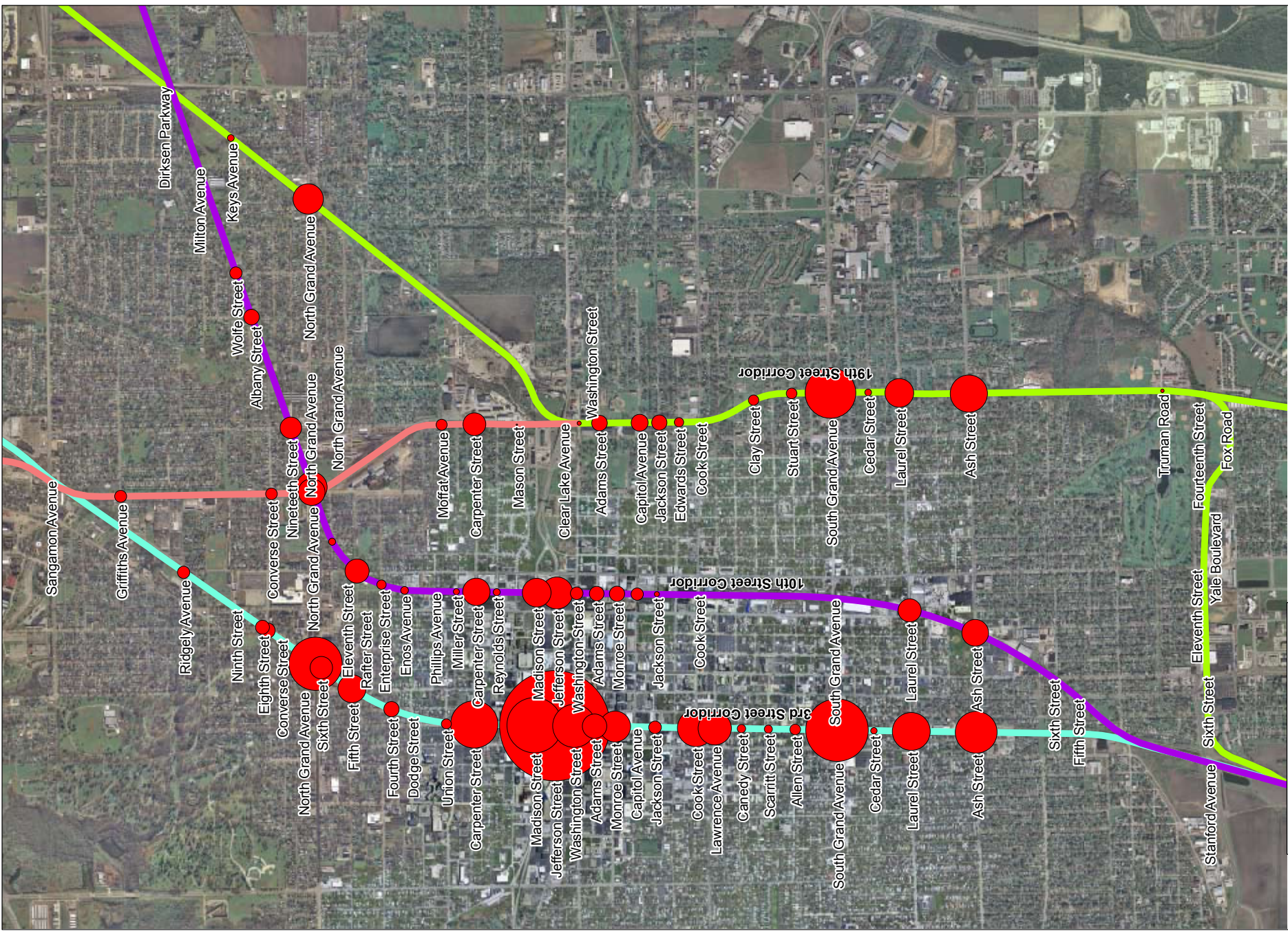
2020 TRAFFIC DELAYS

2010 Existing



Veh-mins - total amount of time that all vehicles are stopped at the crossing

NOTE: 2020 TRAFFIC DELAYS WERE COMPUTED USING 2010 TRAFFIC DATA AND 2020 TRAIN DATA



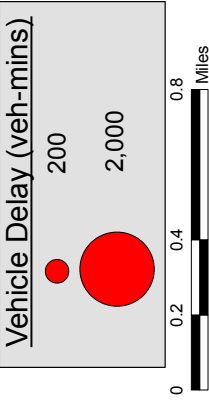
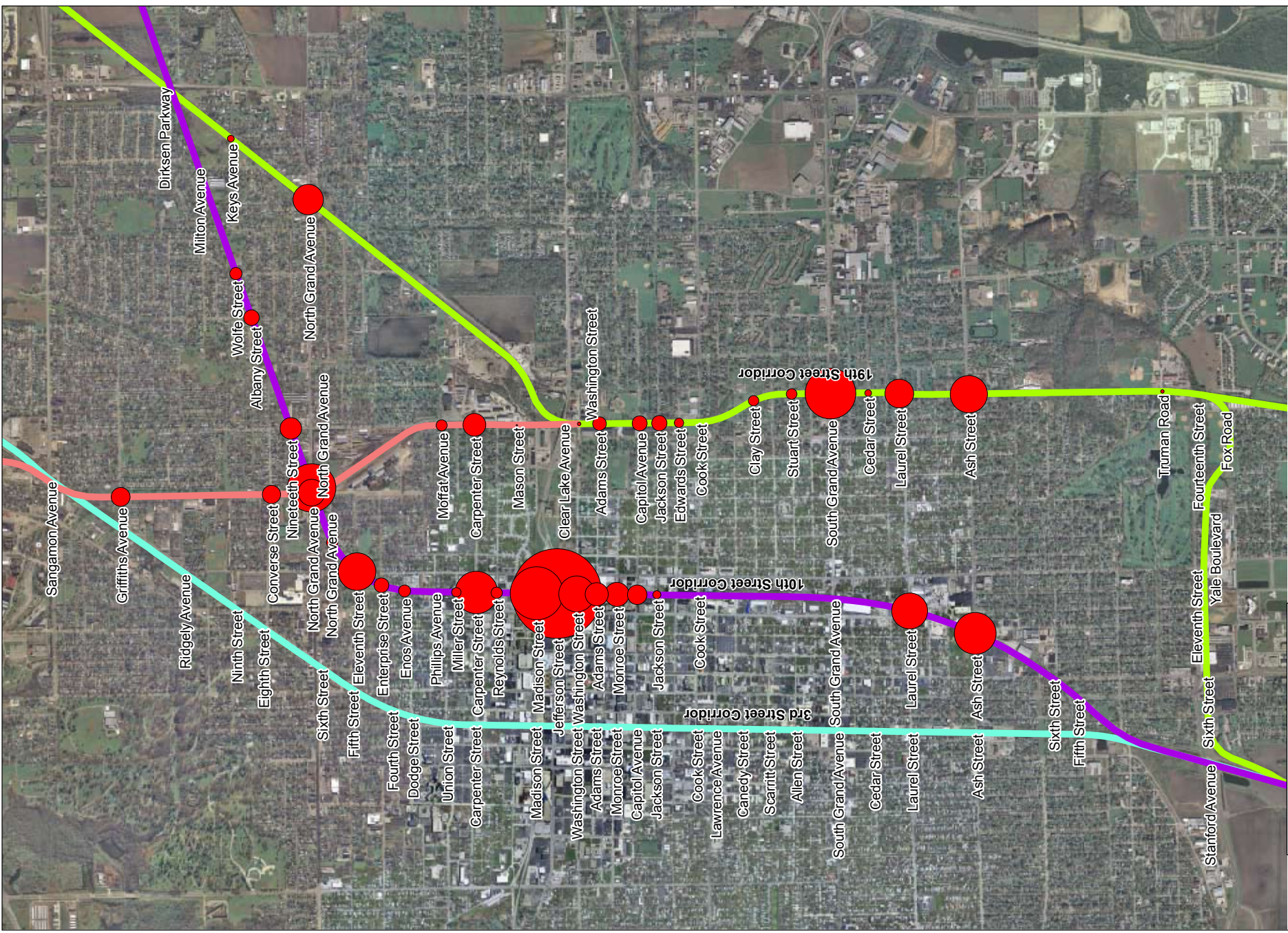
Hanson Professional Services Inc.
 1525 South Sixth Street
 Springfield, Illinois 62707
 Registration No. 184-001084

2020 DELAY - EXISTING CROSSINGS

SPRINGFIELD RAILROAD CORRIDOR STUDY
 SPRINGFIELD, SANGAMON COUNTY, ILLINOIS

09L0179

FIGURE NO.



2020 DELAY - COMBINE UP TRAFFIC ON
10TH STREET CORRIDOR



**SPRINGFIELD RAILROAD CORRIDOR STUDY
SPRINGFIELD, SANGAMON COUNTY, ILLINOIS**

09L0179

FIGURE NO.

