

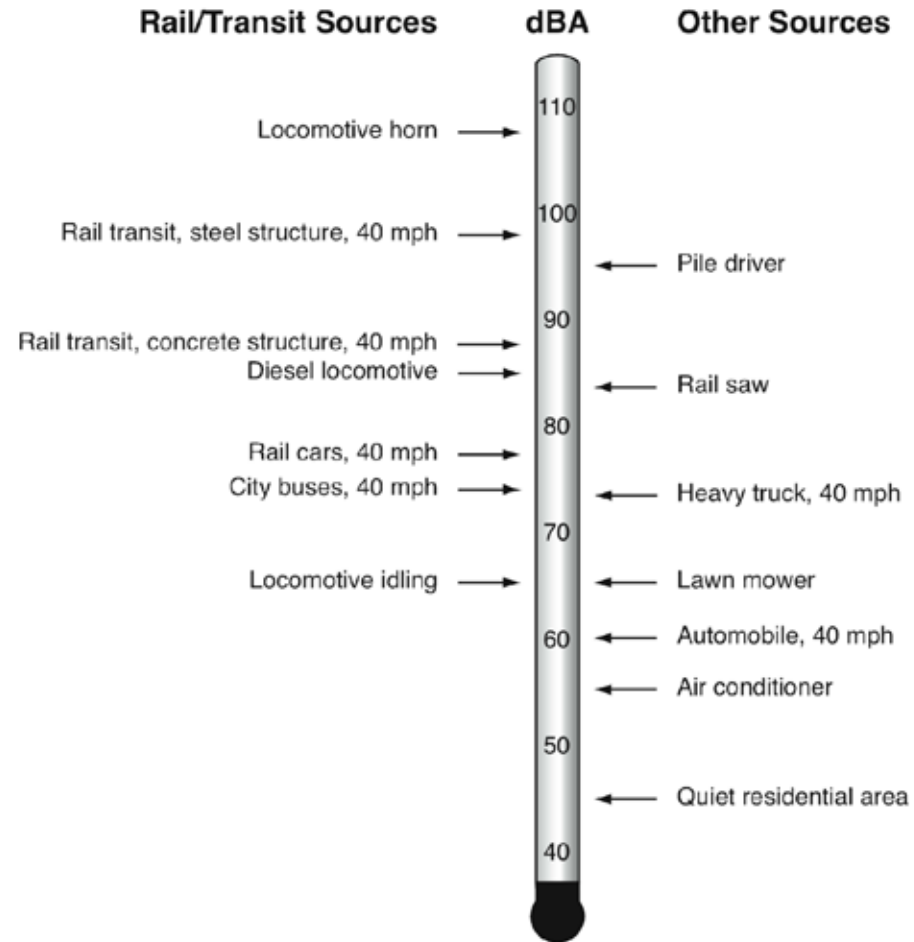


# STATION 5: NOISE & VIBRATION

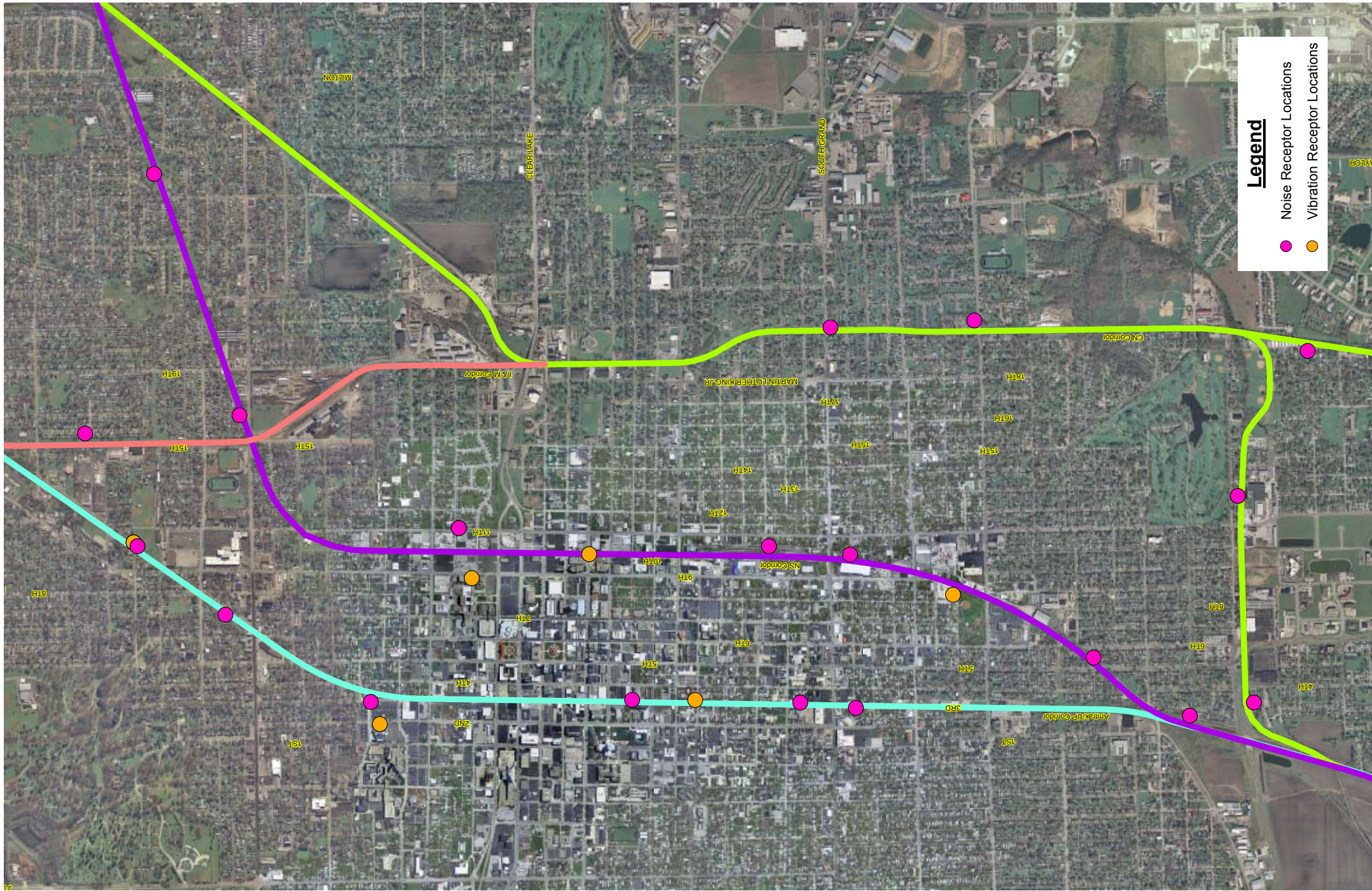
Describes the noise and vibration impacts associated with rail traffic and examines different methods of noise control



# TYPICAL NOISE LEVELS



Typical A-weighted Sound Levels  
100 ft. from Sources



**Legend**

- Noise Receptor Locations (pink dot)
- Vibration Receptor Locations (orange dot)

# QUIET ZONE



A SECTION OF A RAIL LINE THAT CONTAINS ONE OR MORE PUBLIC CROSSINGS AT WHICH TRAIN HORNS ARE NOT ROUTINELY SOUNDED



# TRAFFIC CONTROLS AT QUIET ZONES



ONE - WAY STREET WITH - FULL GATE CLOSURE



FOUR QUADRANT GATES



TWO - WAY STREET WITH RAISED MEDIAN



ROAD CLOSURE



PEDESTRIAN GATE WITH EXIT SWING GATE



PAINTED PAVEMENT MARKINGS

