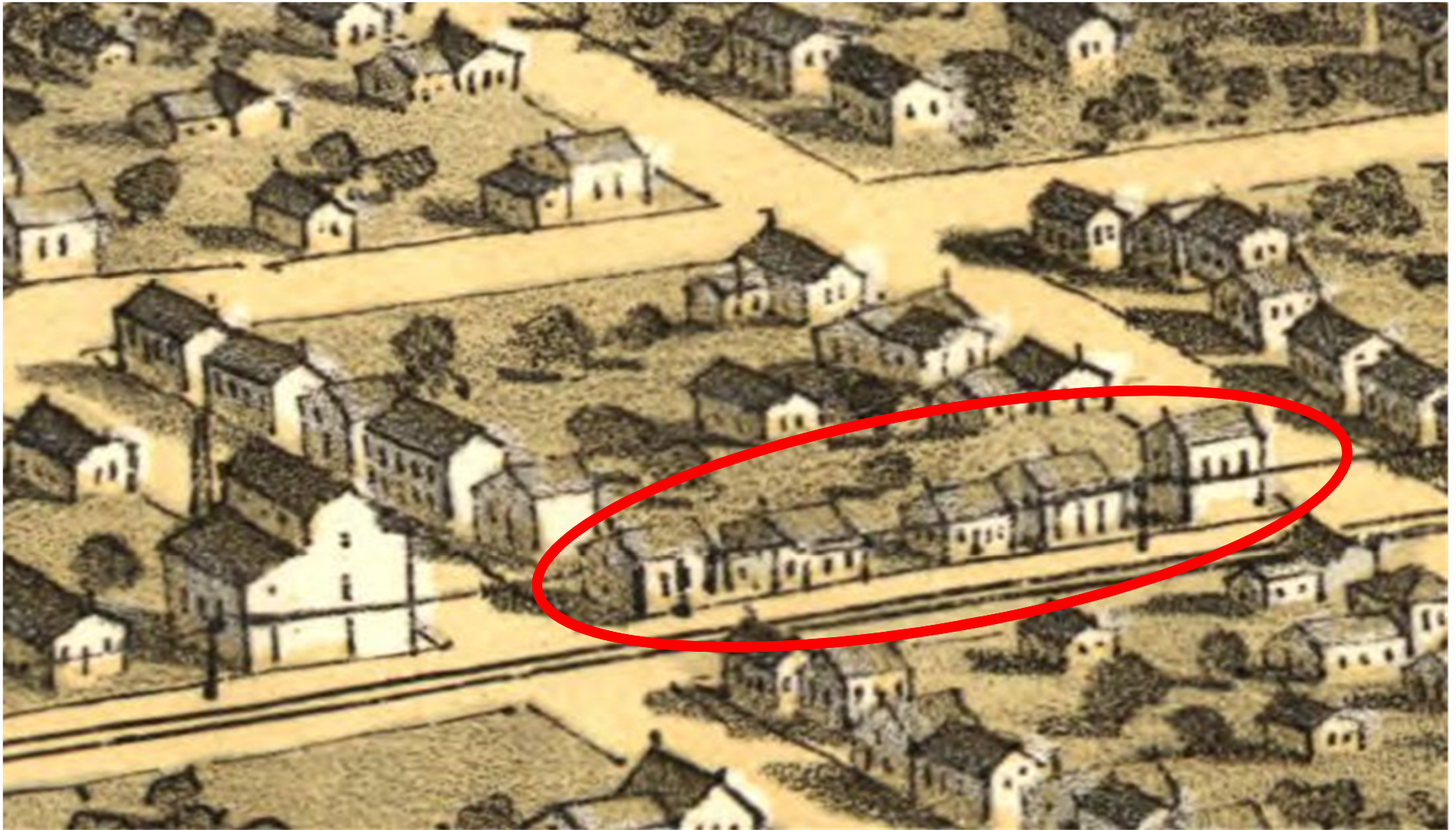


STATION 4

ARCHAEOLOGICAL SITE



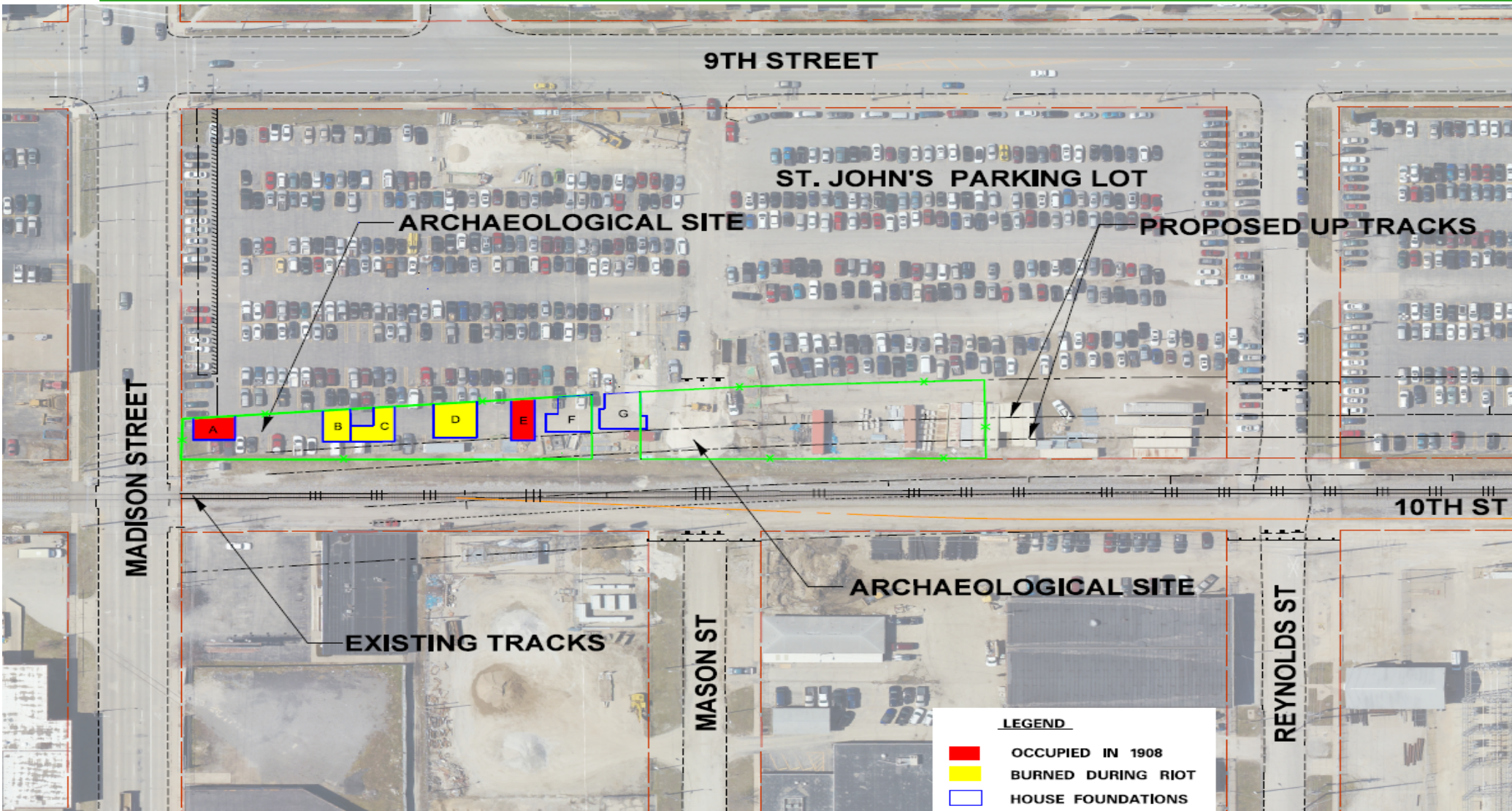
ARCHAEOLOGICAL SURVEY



SITE TESTING



CARPENTER STREET PROJECT AREA



SECTION 106 CONSULTING PARTIES

- **Delta Sigma Theta Sorority, Inc.**
- **Epsilon Sigma Sigma Chapter of Sigma Gamma Rho Sorority, Inc.**
- **Faith Coalition for the Common Good**
- **Greater Springfield Chamber of Commerce**
- **Hospital Sisters Health System**
- **Illinois Legislative Black Caucus**
- **Illinois State Museum Research and Collections Center**
- **Landmarks Illinois**
- **NAACP – Springfield Chapter**
- **Sangamon County Historical Society**
- **Save Old Springfield**
- **Southern Illinois University School of Medicine**
- **Springfield & Central Illinois African - American History Museum**
- **St. Johns Hospital**
- **State Representative Al Riley**
- **State Representative Tim Butler**
- **Springfield Historic Sites Commission**

SITE FINDINGS / HOUSE E



SECTION 106

THE SECTION 106 PROCESS

