

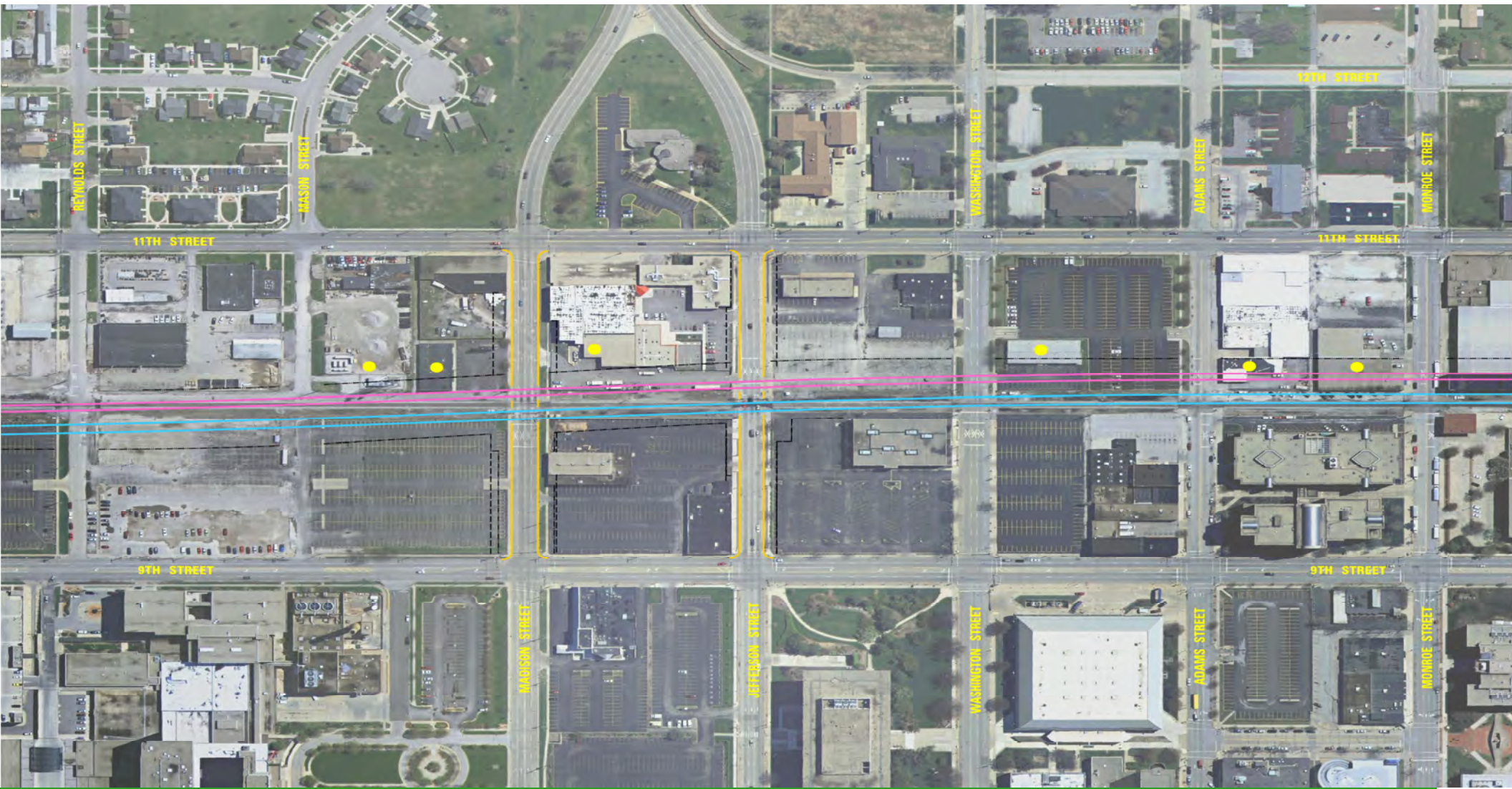
# STATION 6

## USABLE SEGMENT III



# USABLE SEGMENT III

## MADISON & JEFFERSON UNDERPASSES



# USABLE SEGMENT III

## MADISON AND JEFFERSON STREET UNDERPASSES

- **Funding**

- City (Land Acq) – \$5.2 M
  - ICC – \$14 M (Funding not yet secured)
  - USDOT – \$16 M (Funding not yet secured)
  - IDOT – \$11.7 M
- Total - \$46.9 M

- **Schedule**

- Multimodal Planning Begins – Fall 2018
- Design Begins – Spring 2019
- Construction – Winter 2021-Fall 2022