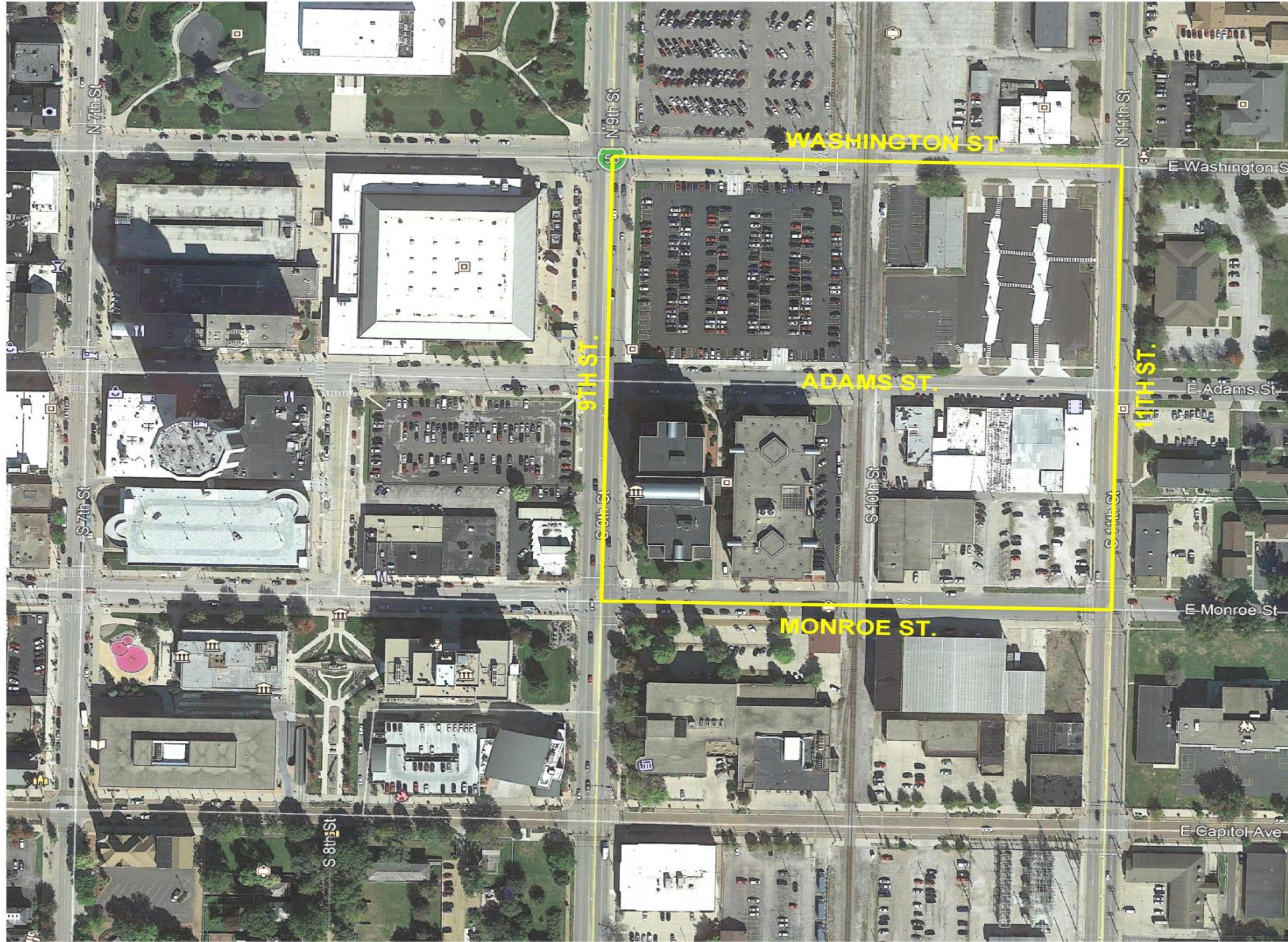
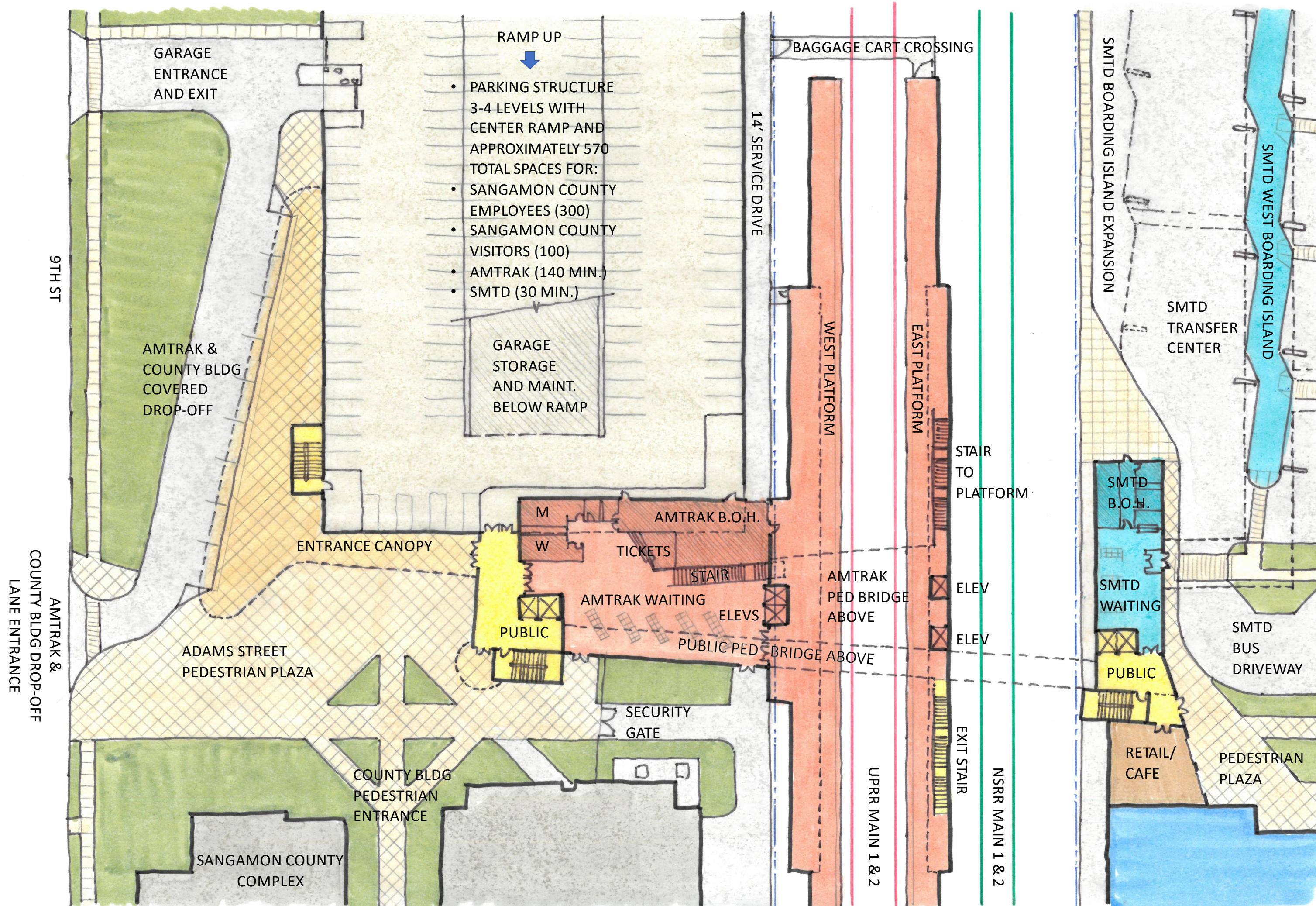


# SSCTC LOCATION

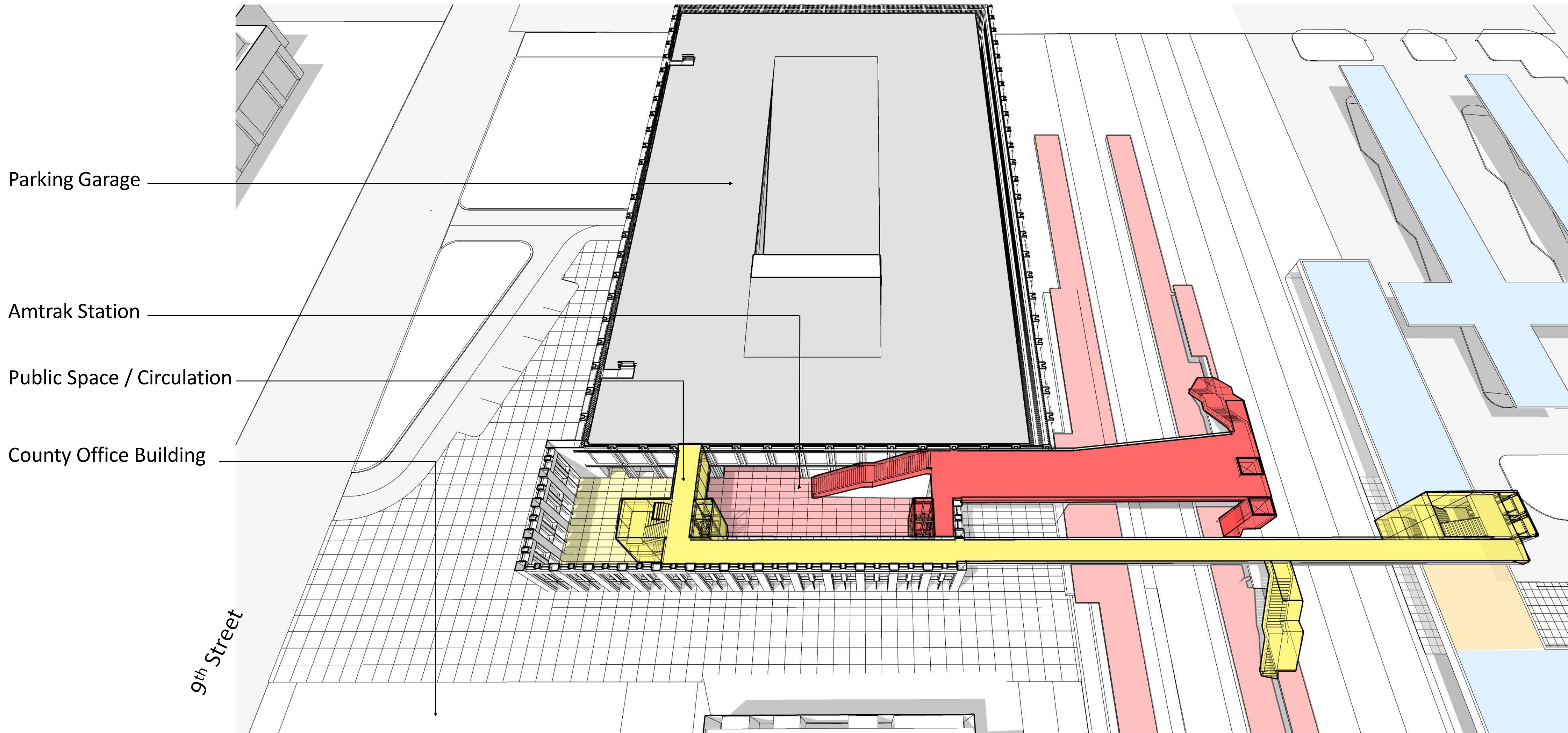


# PREFERRED ALTERNATIVE



- Amtrak Station located on ground level with direct access to west passenger platform
- East passenger platform accessed via pedestrian bridge
- Amtrak and County Building drop-off located on west side with canopy cover wrapping around parking structure
- Canopy provided over SMTD Transfer Center boarding islands
- All parking for Sangamon County, Amtrak and SMTD located in parking structure on west side

# PREFERRED ALTERNATIVE



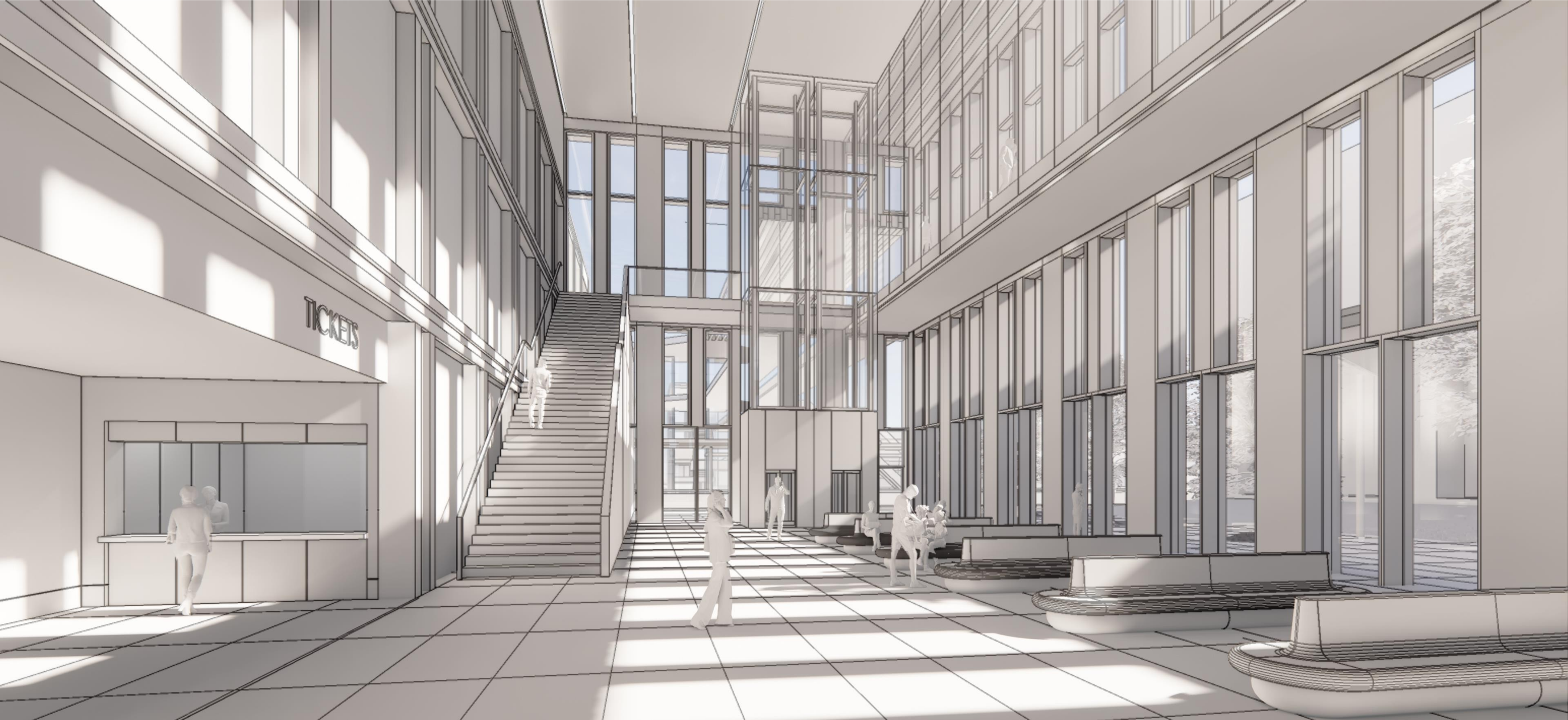
Bridge Level Circulation – Adjusted Planning

# PREFERRED ALTERNATIVE



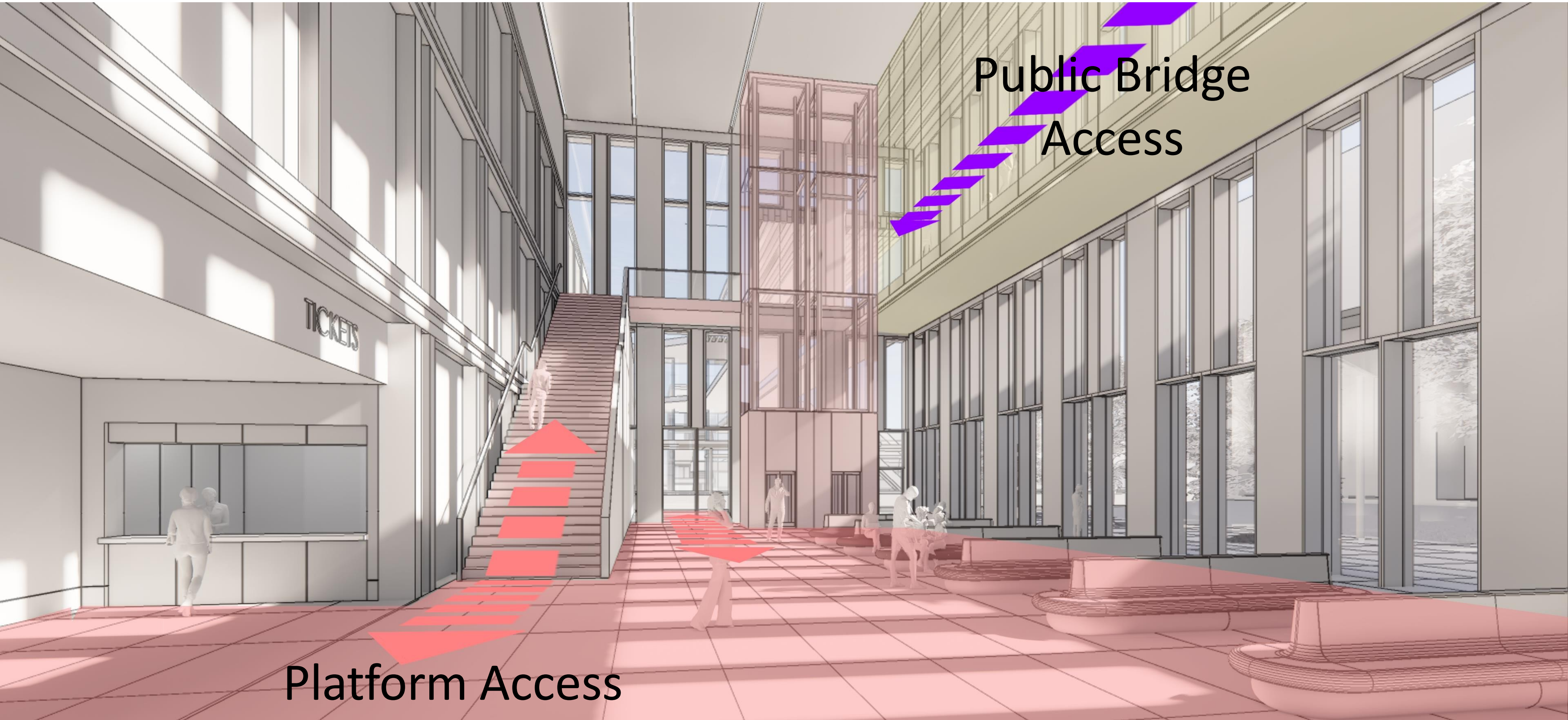
Preliminary View 1 – Public Circulation

# PREFERRED ALTERNATIVE



Preliminary View 2 – Station Interior

# PREFERRED ALTERNATIVE

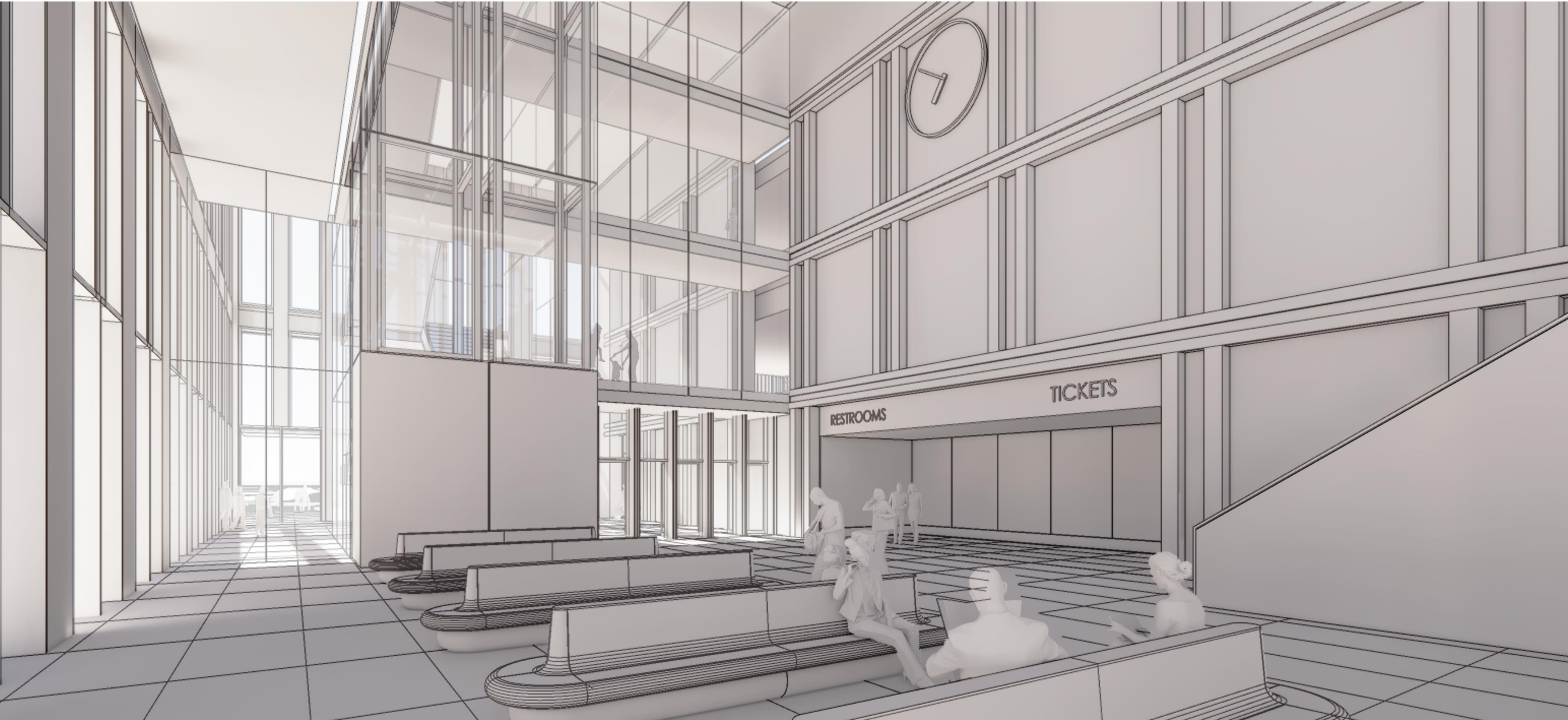


Public Bridge  
Access

Platform Access

Preliminary View 2 – Station Interior

# PREFERRED ALTERNATIVE



# PREFERRED ALTERNATIVE

