



STAKEHOLDER'S ADVISORY GROUP MEETING
MAY 17, 2018

PROJECT REVIEW

Why is this Project Needed?

- **Pedestrian and Vehicular Safety**
- **Reduce Congestion and Delays**
- **Eliminate Train Horn Noise**
- **Increase Springfield's Economic Growth**

SAFETY & DELAYS



SPRINGFIELD RAIL IMPROVEMENTS PROJECT

TRAIN TRAFFIC

	Current (2010) Rail Traffic	Projected (2030) Rail Traffic
Union Pacific 3 rd Street	15	45
Norfolk Southern 10 th Street	16	27
Canadian National 19 th Street	4	9
TOTAL	35 Trains	81 Trains

SPRINGFIELD RAIL IMPROVEMENTS PROJECT

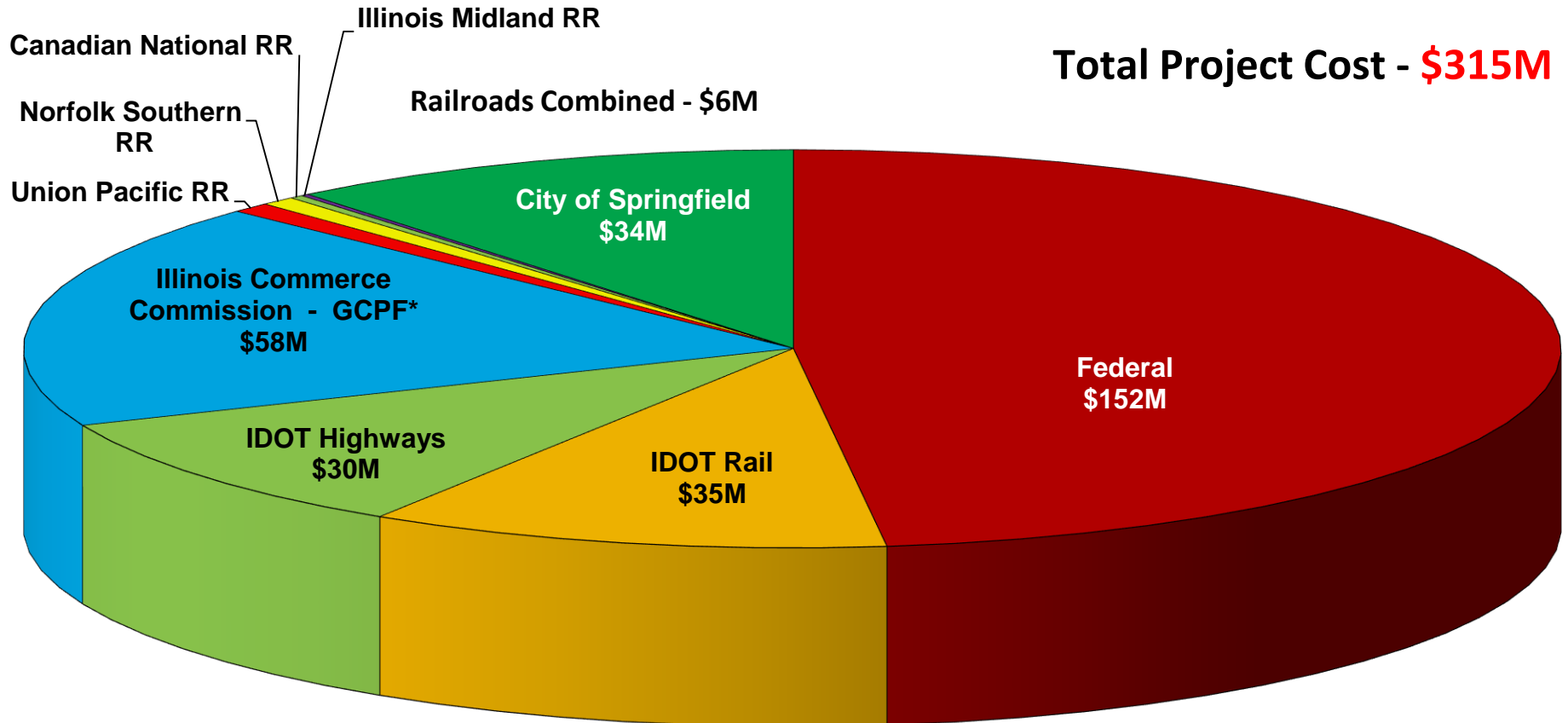
FUNDING

SPRINGFIELD



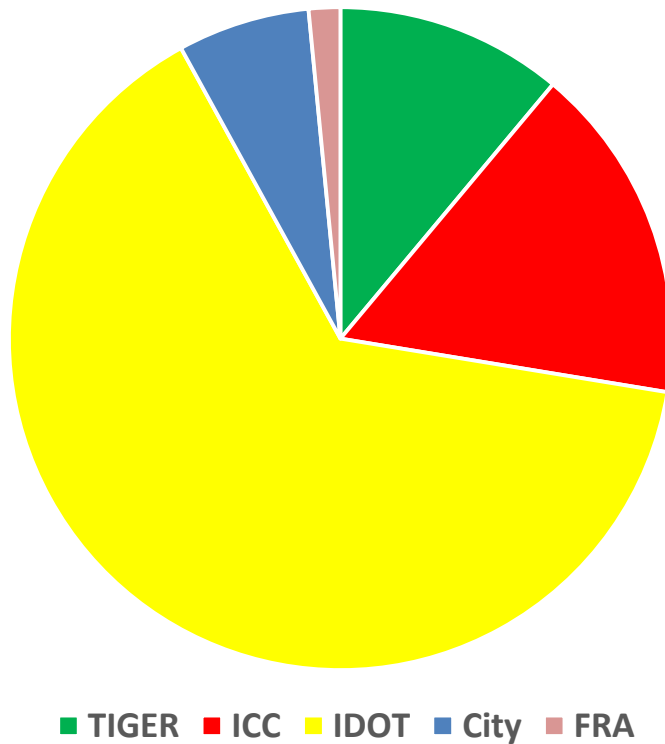
RAIL IMPROVEMENTS PROJECT

ANTICIPATED PROJECT FUNDING



SPRINGFIELD RAIL IMPROVEMENTS PROJECT

CURRENT FUNDING COMMITMENTS



Totals by Funding Source
(Millions)

\$	28.4	TIGER	20%
\$	19.9	ICC	14%
\$	84.0	IDOT	59%
\$	8.4	City	6%
\$	2.0	FRA	1%

Total - \$143 = 45% of Project

SPRINGFIELD RAIL IMPROVEMENTS PROJECT

USABLE SEGMENT I

SPRINGFIELD



RAIL IMPROVEMENTS PROJECT

CARPENTER STREET UNDERPASS - COMPLETED



SPRINGFIELD RAIL IMPROVEMENTS PROJECT

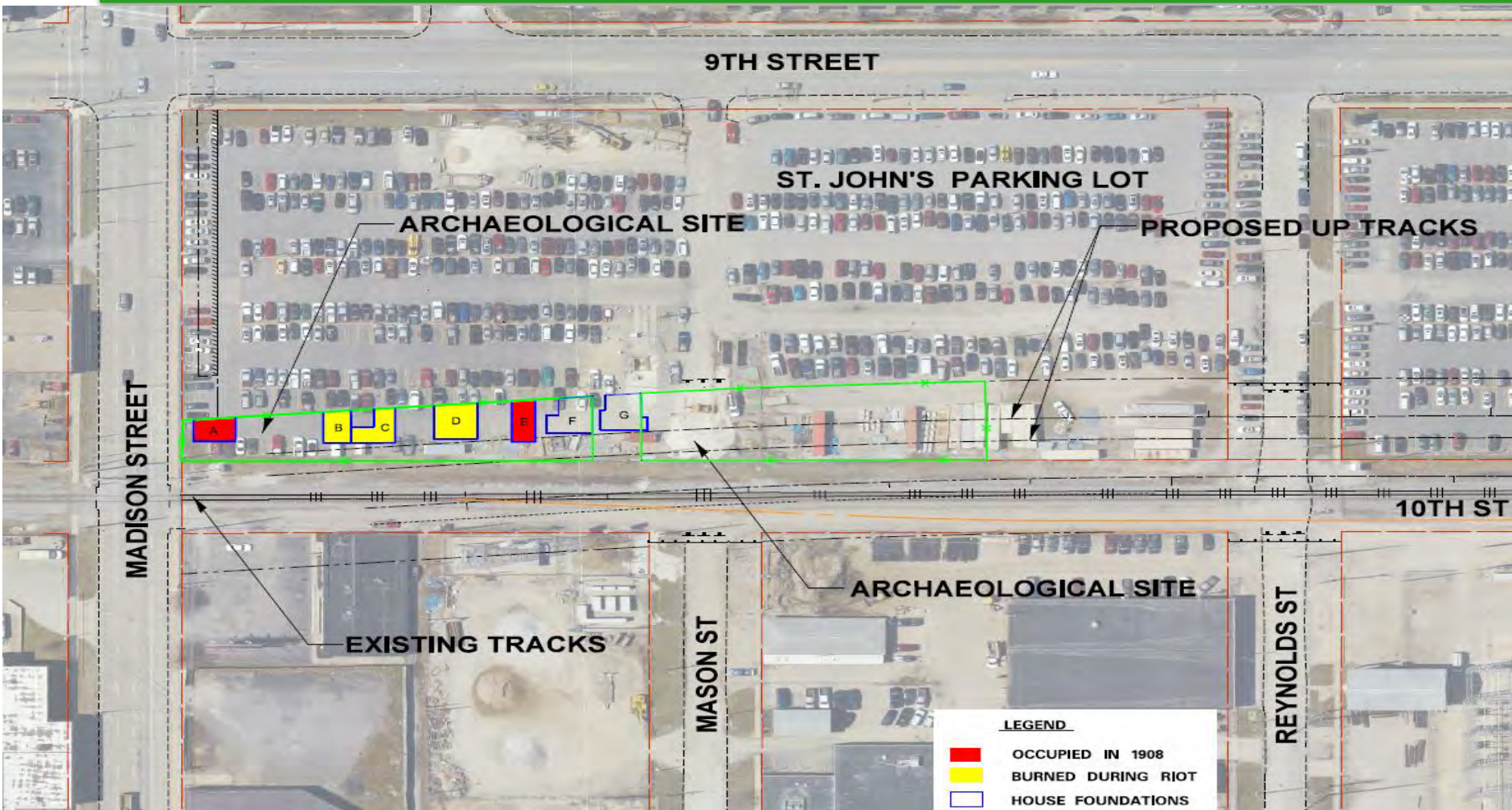
ARCHAEOLOGICAL SITE

SPRINGFIELD



RAIL IMPROVEMENTS PROJECT

CARPENTER STREET PROJECT AREA



SPRINGFIELD RAIL IMPROVEMENTS PROJECT

SITE FINDINGS / HOUSE E



SPRINGFIELD RAIL IMPROVEMENTS PROJECT

ARCHAEOLOGICAL SITE STATUS

Consulting Parties Meetings – July 23, 2015, August 29, 2016 and March 8, 2018

- **Possible treatment options/mitigation measures:**
 - Data recovery (i.e., excavation and curation of cultural material) for areas directly affected by the railroad project
 - Educational programming, scholarly research and publication, incorporation into a museum display, site tours, etc.)
 - Preservation-in-place for areas outside of railroad right-of-way
 - Video documentation of excavation
 - Public viewing & interpretation opportunities during excavation
 - Install interpretative signage/memorial at the site describing its history and significance

LIBRARY OF CONGRESS VISIT



SPRINGFIELD RAIL IMPROVEMENTS PROJECT

LIBRARY OF CONGRESS VISIT



SPRINGFIELD RAIL IMPROVEMENTS PROJECT

ARCHAEOLOGICAL SITE ARTIFACTS



Figure 17. The fire-deposits from House B included a range of architectural items associated with the collapse and/or post-fire clean-up activities (located predominately in Zone III). Plaster (top; Lot B-9) and brick rubble were plentiful, and capped the relatively thin zone (Zone IV) that contained the majority of the household furnishings. Nails (bottom; Lot B-12) were predominately of the machine cut variety, and although the nails were generally fragmentary and heavily encrusted with plaster, three sizes were observed. These included heavy framing nails (4" long), smaller framing and trim nails (2 1/2" long), and lath nails (1 1/2" long) (Left). A small sample of clinched nails were also recovered, and probably indicate the presence of plank doors. Only one wire-drawn nail was recovered (right).

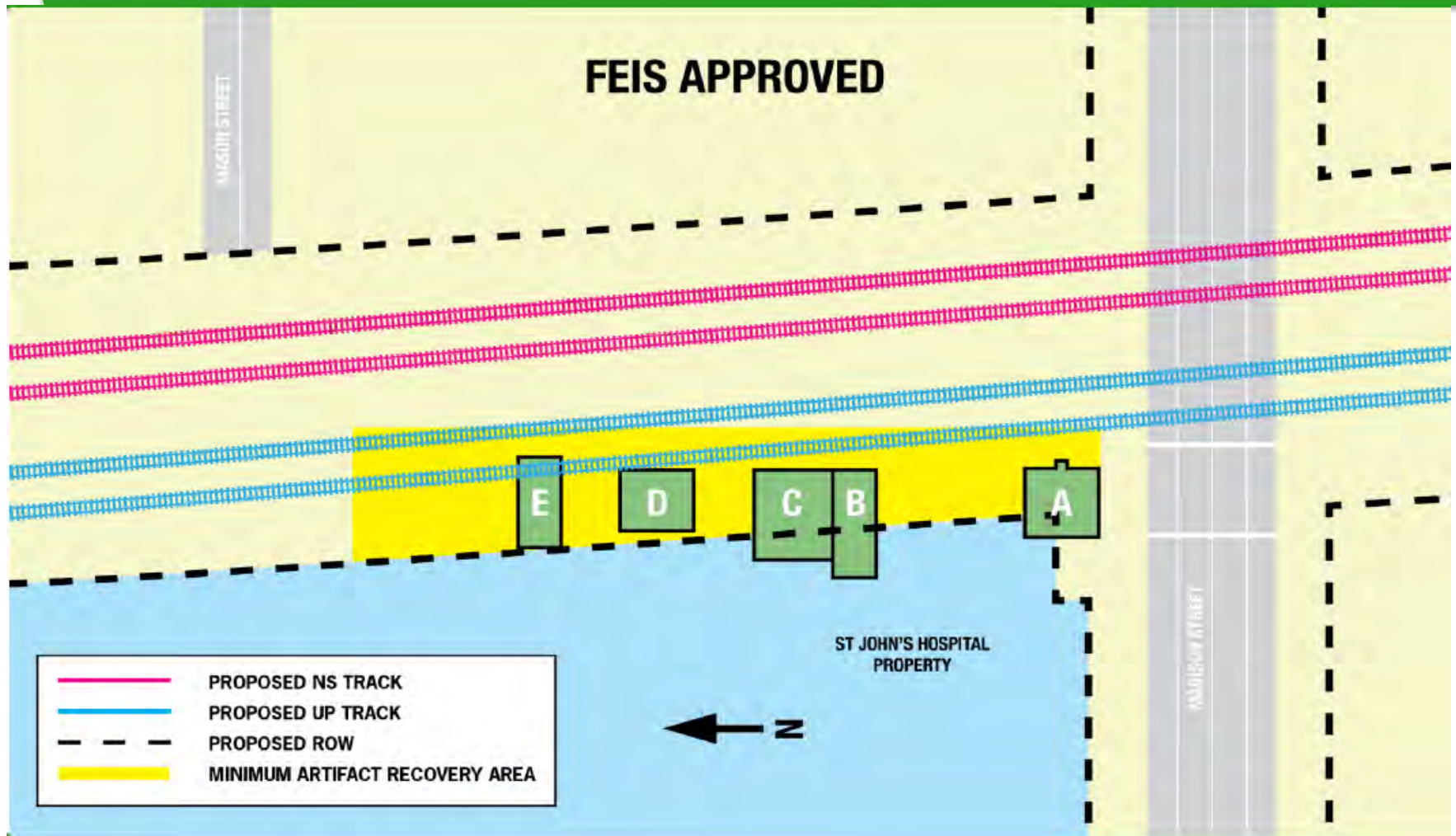
SPRINGFIELD RAIL IMPROVEMENTS PROJECT

ARCHAEOLOGICAL SITE ARTIFACTS



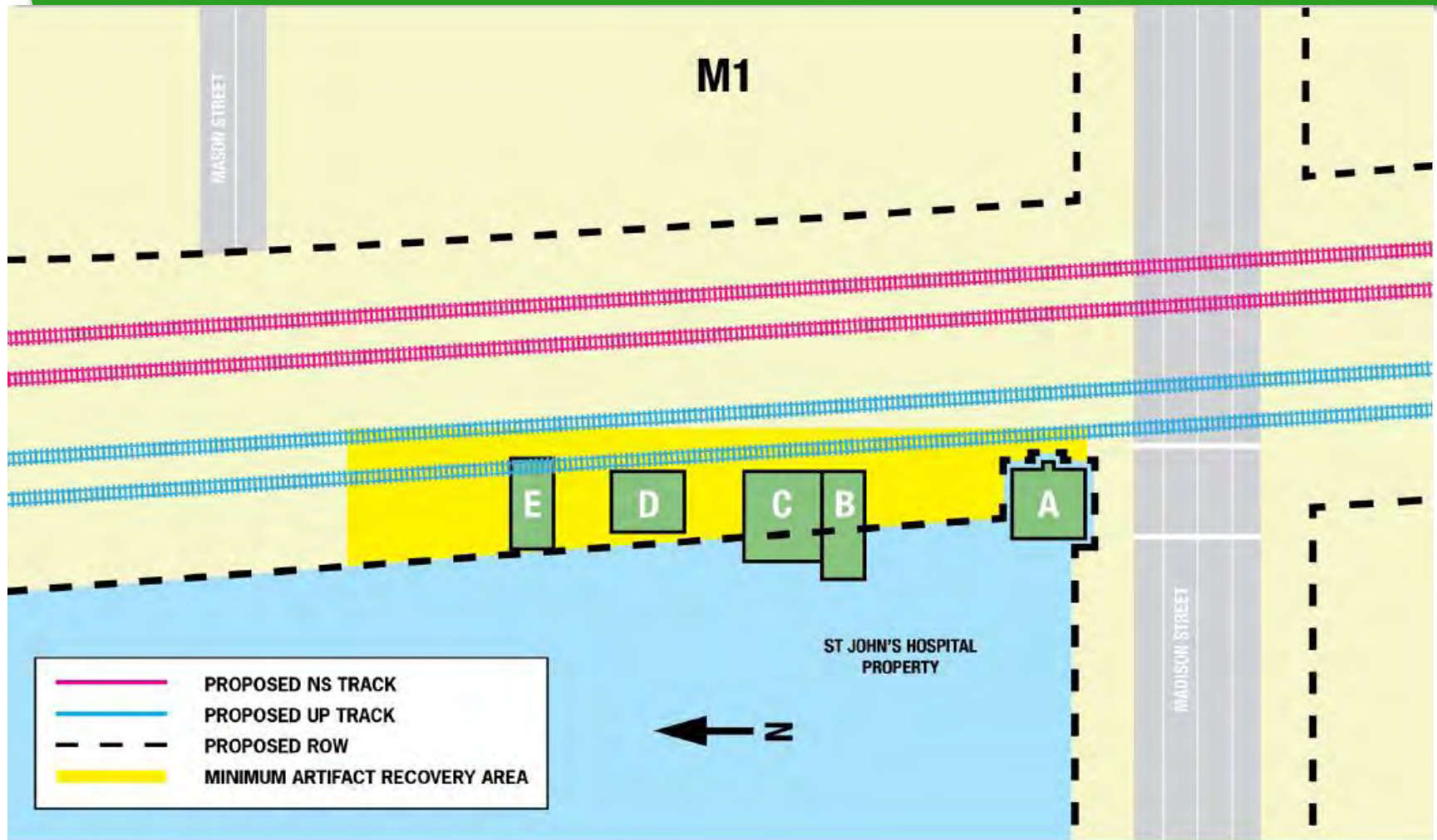
SPRINGFIELD RAIL IMPROVEMENTS PROJECT

FEIS ALTERNATIVE - 2012



SPRINGFIELD RAIL IMPROVEMENTS PROJECT

POTENTIAL RAIL OPTION (M-1)



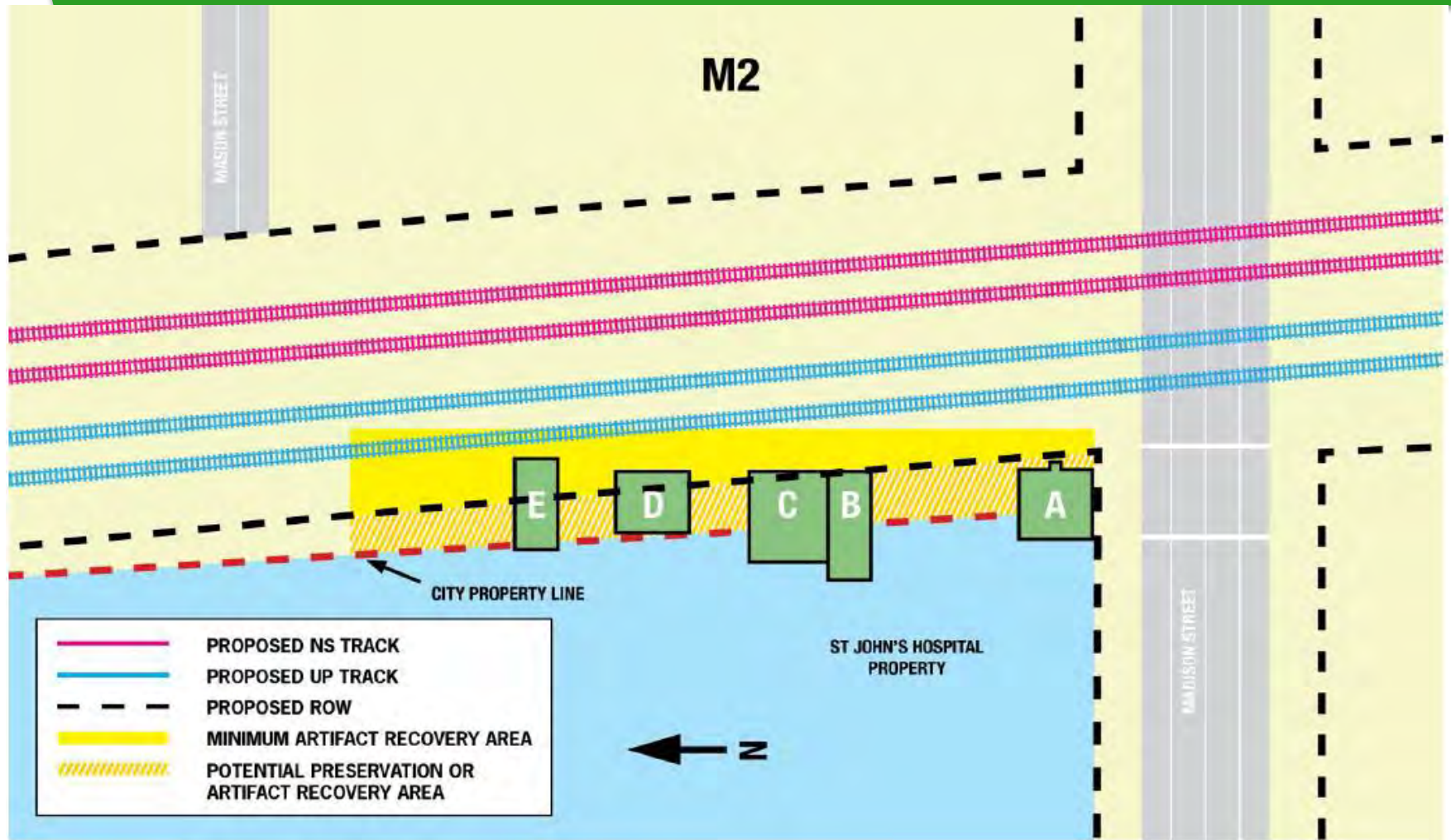
SPRINGFIELD RAIL IMPROVEMENTS PROJECT

POTENTIAL RAIL OPTION (M-1)

Potential Rail Option M1

- Retains the FEIS track alignment but eliminates the railroad service road and narrows the railroad right-of-way at House A.
- Does not provide all of the railroad design criteria committed to at the beginning of the project since it eliminates the service road at House A
- Requires data recovery from about 13,800 SF of the archaeology site
- Avoids House A and requires a retaining wall to protect House A
- Requires data recovery for all of Houses D and E and for most of Houses B and C

POTENTIAL RAIL OPTION (M-2)



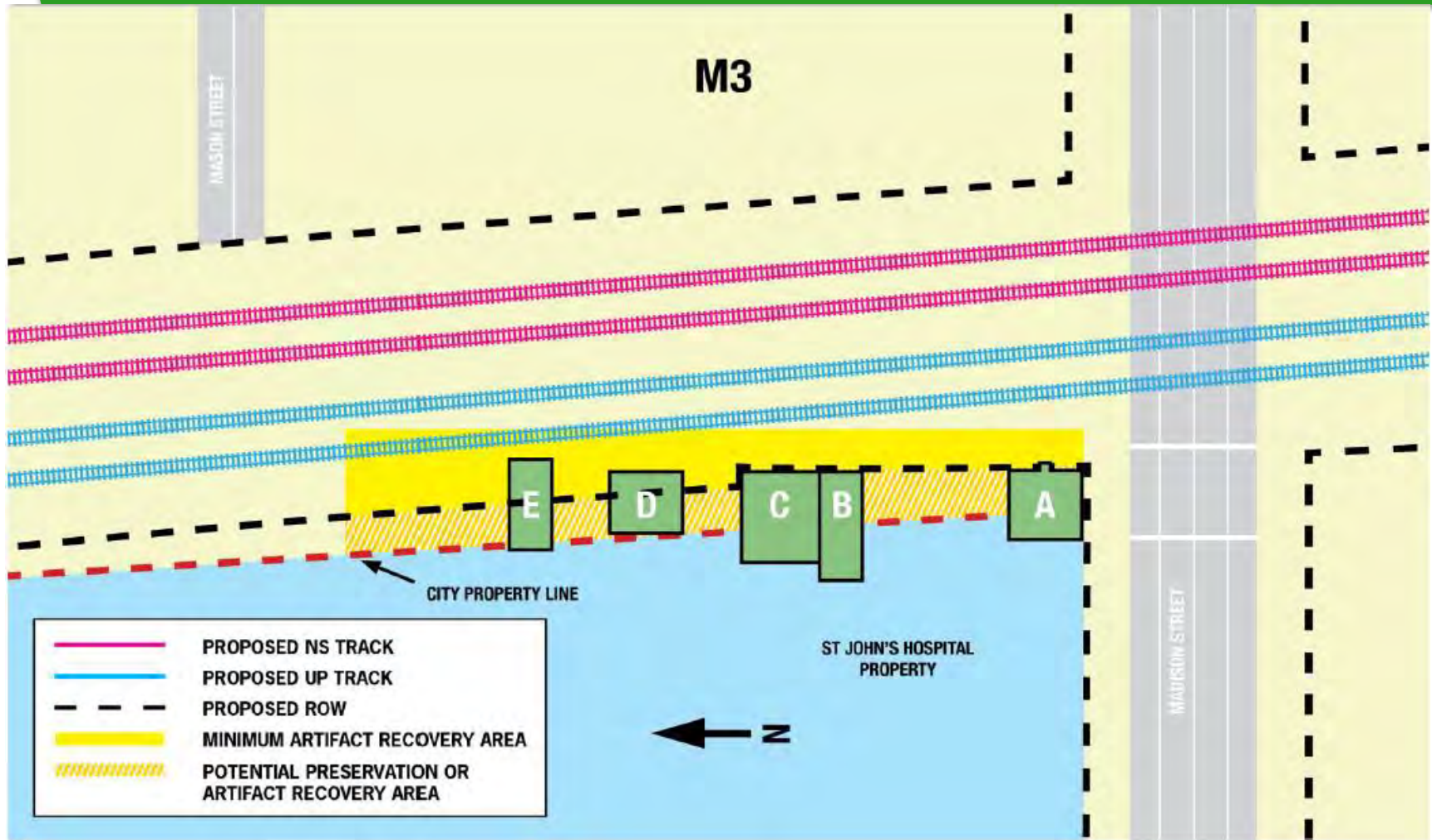
SPRINGFIELD RAIL IMPROVEMENTS PROJECT

POTENTIAL RAIL OPTION (M-2)

Potential Rail Option M2

- Realigns the tracks and shifts them approximately 22 ft to the east at the archaeology site. This is the maximum possible shift to the east while still maintaining the design speed and avoiding the CWLP substation and the St. John's electric switchgear
- Provides all of the railroad design criteria established at the beginning of the project
- Requires data recovery from about 8,300 SF of the archaeology site.
- Avoids House A
- Requires data recovery from about one half of House E and small portions of Houses D, C and B

POTENTIAL RAIL OPTION (M-3)



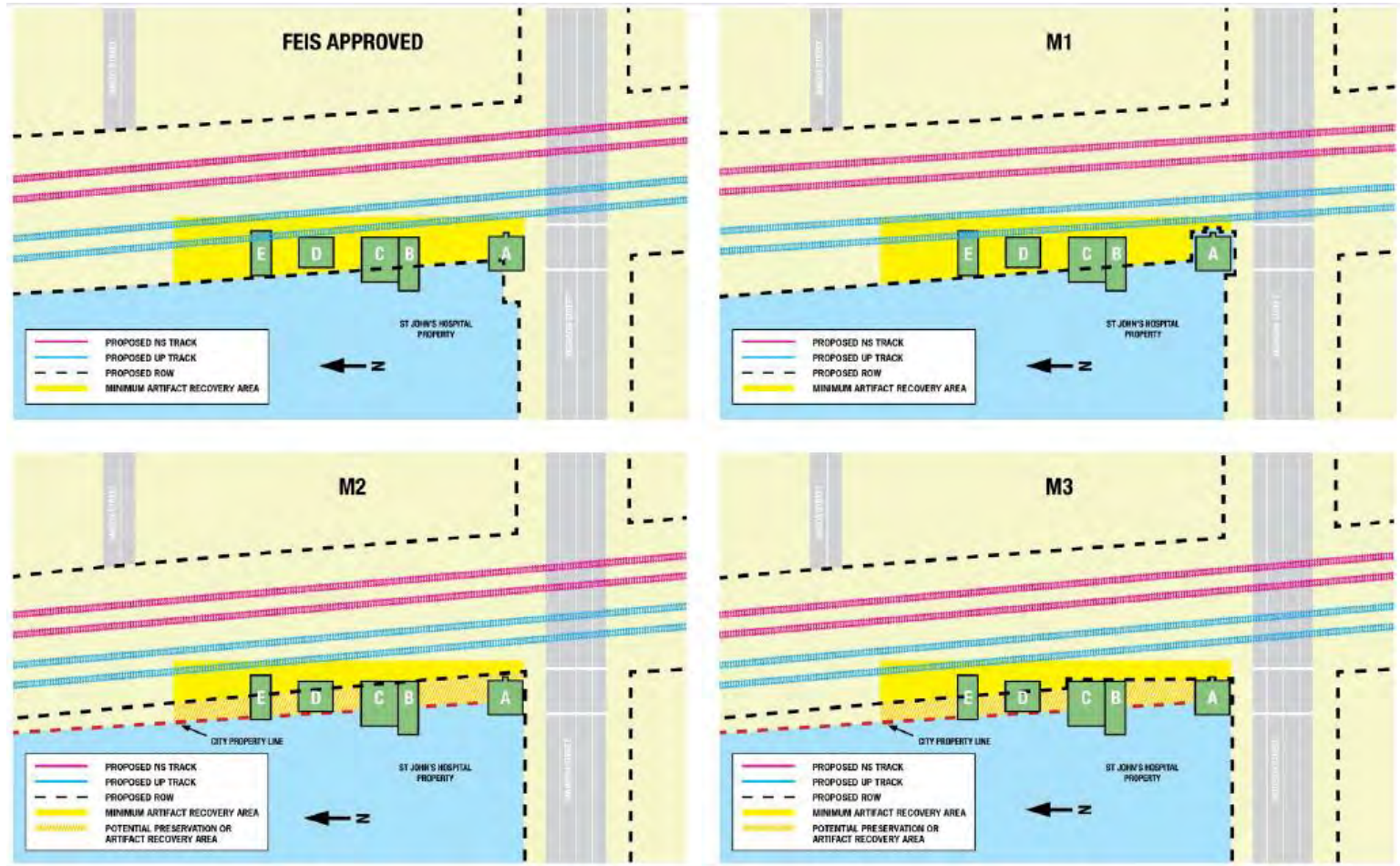
SPRINGFIELD RAIL IMPROVEMENTS PROJECT

POTENTIAL RAIL OPTION (M-3)

Potential Rail Option M3

- Has the same railroad alignment as M2 but narrows the UP right-of-way and constructs a 150 ft long retaining wall to avoid Houses B and C
- Does not provide all of the railroad design criteria committed to at the beginning of the project since it narrows UP right-of-way by about 8 ft
- Requires data recovery from about 8,100 SF of the archaeology site
- Avoids Houses A, B and C
- Requires data recovery from about half of House E and one third of House D

POTENTIAL RAIL MINIMIZATION OPTIONS



SPRINGFIELD RAIL IMPROVEMENTS PROJECT

ARCHAEOLOGICAL SITE STATUS

- **Section 4(f) Process**

- Site eligible for the National Register of Historic Places
- FRA met with the railroad companies and they will not compromise their safety and operational design standards
- FRA determined no feasible and prudent Avoidance Alternatives
- FRA moving forward with Minimization Alternative M-2
- FRA reviewing draft Section 4(f) Report

USABLE SEGMENT II

SPRINGFIELD



RAIL IMPROVEMENTS PROJECT

USABLE SEGMENT II

ASH & LAUREL STREET UNDERPASSES



SPRINGFIELD RAIL IMPROVEMENTS PROJECT

USABLE SEGMENT II FUNDING

Ash & Laurel Street Underpasses

Total Cost - \$50.0 Million

IDOT - \$17.5 M

TIGER - \$14.0 M

ICC - \$15.0 M

FRA - \$2.0 M

City - \$1.4 M

USABLE SEGMENT II

ASH & LAUREL STREET UNDERPASSES

- **Bids opened August 4th, 2017**
 - **Construction Contract awarded to: Freesen, A Division of United Contractors Midwest, Inc.**
- **Construction: October 2017 – Fall 2020**

USABLE SEGMENT II – DECEMBER 16, 2017

GROUND BREAKING CEREMONY



SPRINGFIELD RAIL IMPROVEMENTS PROJECT

USABLE SEGMENT II – DECEMBER 16, 2017

GROUND BREAKING CEREMONY



SPRINGFIELD RAIL IMPROVEMENTS PROJECT

USABLE SEGMENT II – DECEMBER 16, 2017

GROUND BREAKING CEREMONY



SPRINGFIELD RAIL IMPROVEMENTS PROJECT

USABLE SEGMENT II – DECEMBER 16, 2017

GROUND BREAKING CEREMONY



SPRINGFIELD RAIL IMPROVEMENTS PROJECT

USABLE SEGMENT II – DECEMBER 16, 2017

GROUND BREAKING CEREMONY



SPRINGFIELD RAIL IMPROVEMENTS PROJECT

USABLE SEGMENT II – DECEMBER 16, 2017

GROUND BREAKING CEREMONY



SPRINGFIELD RAIL IMPROVEMENTS PROJECT

USABLE SEGMENT II – DECEMBER 16, 2017

GROUND BREAKING CEREMONY



SPRINGFIELD RAIL IMPROVEMENTS PROJECT

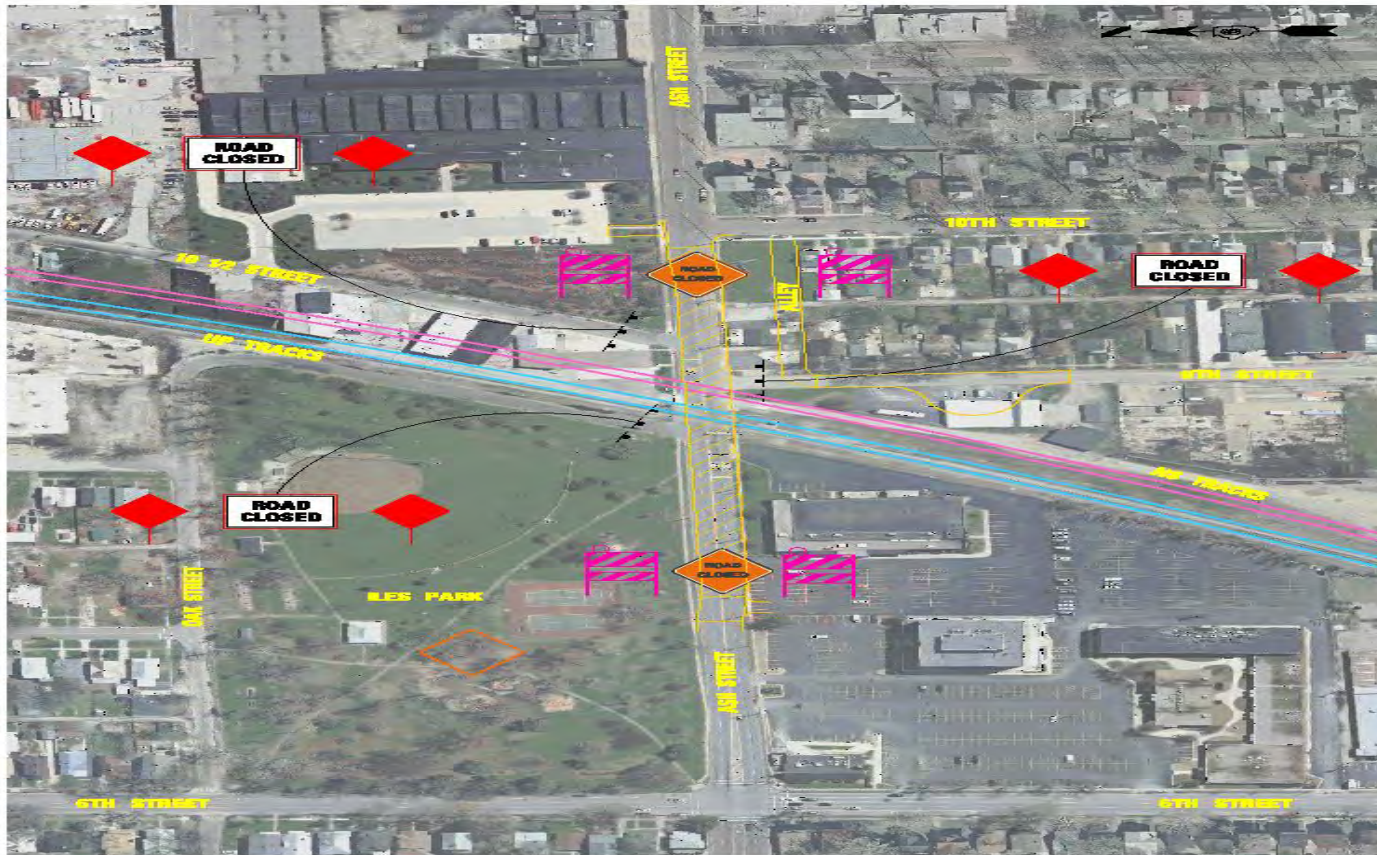
USABLE SEGMENT II



SPRINGFIELD RAIL IMPROVEMENTS PROJECT

USABLE SEGMENT II

ASH STREET ROAD CLOSURE



SPRINGFIELD RAIL IMPROVEMENTS PROJECT

ASH STREET CONSTRUCTION



SPRINGFIELD RAIL IMPROVEMENTS PROJECT

ASH STREET CONSTRUCTION



SPRINGFIELD RAIL IMPROVEMENTS PROJECT

ASH STREET CONSTRUCTION



SPRINGFIELD RAIL IMPROVEMENTS PROJECT

ASH STREET CONSTRUCTION



SPRINGFIELD RAIL IMPROVEMENTS PROJECT

ASH STREET CONSTRUCTION



SPRINGFIELD RAIL IMPROVEMENTS PROJECT

ASH STREET CONSTRUCTION



SPRINGFIELD RAIL IMPROVEMENTS PROJECT

ASH STREET CONSTRUCTION



SPRINGFIELD RAIL IMPROVEMENTS PROJECT

ASH STREET CONSTRUCTION



SPRINGFIELD RAIL IMPROVEMENTS PROJECT

ASH STREET CONSTRUCTION



SPRINGFIELD RAIL IMPROVEMENTS PROJECT

ASH STREET CONSTRUCTION



SPRINGFIELD RAIL IMPROVEMENTS PROJECT

ASH STREET CONSTRUCTION



SPRINGFIELD RAIL IMPROVEMENTS PROJECT

ASH STREET CONSTRUCTION



SPRINGFIELD RAIL IMPROVEMENTS PROJECT

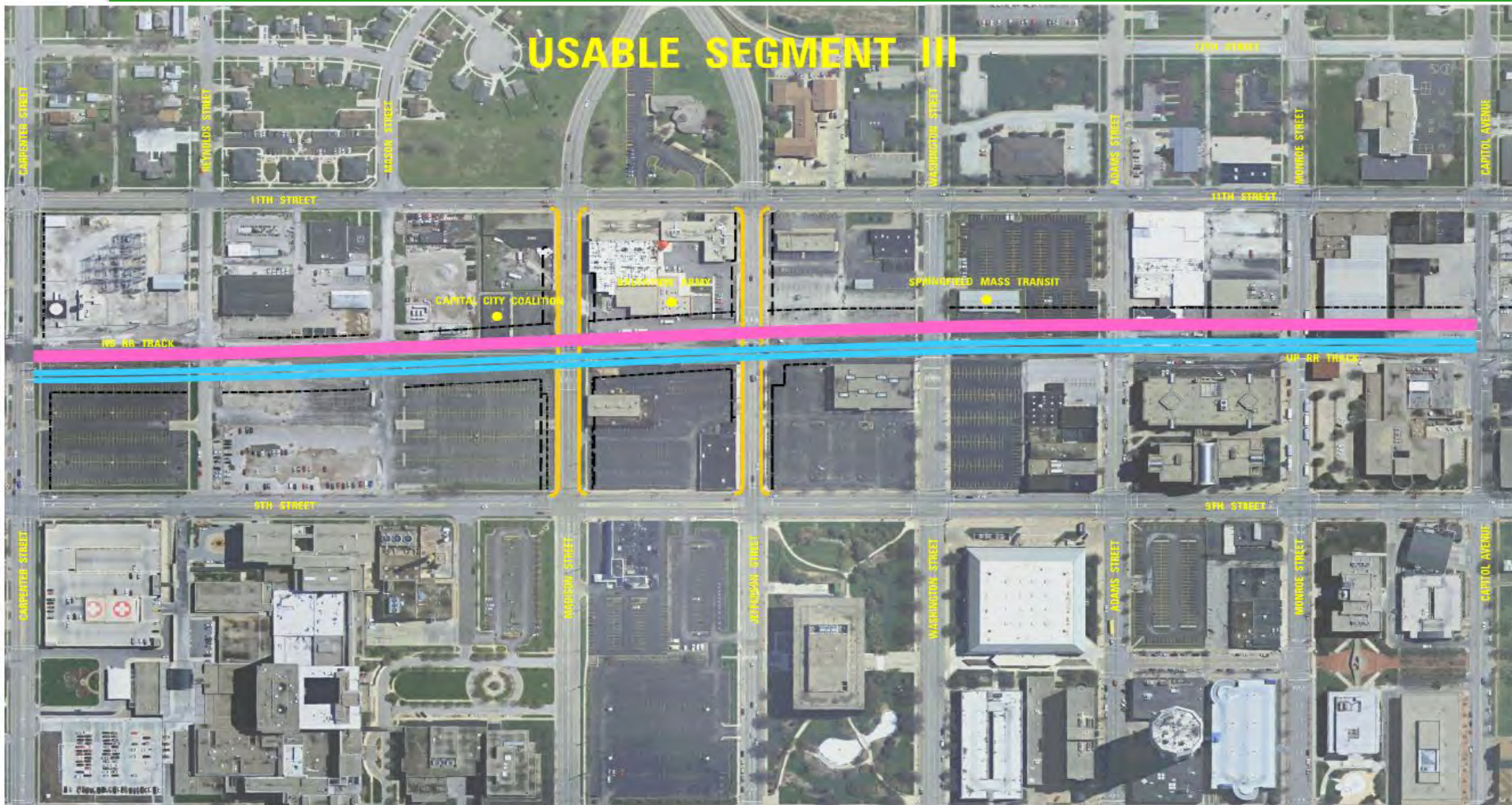
USABLE SEGMENT III

SPRINGFIELD



RAIL IMPROVEMENTS PROJECT

USABLE SEGMENT III MADISON & JEFFERSON STREET UNDERPASSES



SPRINGFIELD RAIL IMPROVEMENTS PROJECT

USABLE SEGMENT III

MADISON AND JEFFERSON STREET UNDERPASSES

- **Funding**

- City (Land Acq) – \$5.2 M
- ICC – \$14 M (Funding not yet secured)
- USDOT – \$16 M (Funding not yet secured)
- IDOT – \$11.2 M

Total - \$46.5 M

- **Schedule**

- Multimodal Planning Begins – Fall 2018
- Design Begins – Spring 2019
- Construction – Winter 2021-Fall 2022

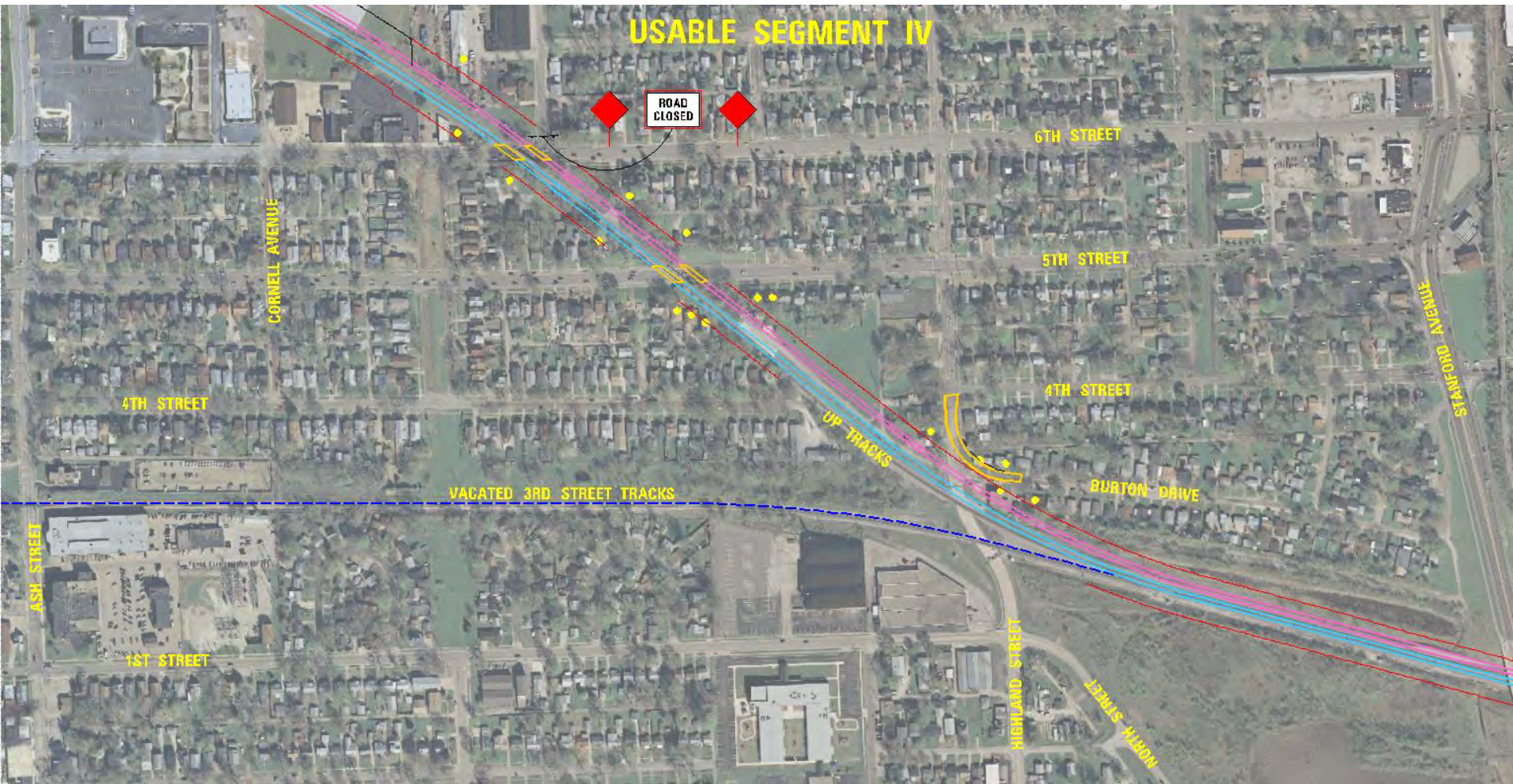
USABLE SEGMENT IV

SPRINGFIELD



RAIL IMPROVEMENTS PROJECT

USABLE SEGMENT IV PRINCETON TO STANFORD (5th and 6th STREET BRIDGES)



SPRINGFIELD RAIL IMPROVEMENTS PROJECT

USABLE SEGMENT IV

PRINCETON TO STANFORD (5th and 6th STREET BRIDGES)

- **Funding** – (Dependent on an approved Transportation Bill)
 - City (Land Acq) – \$2.5 M
 - IDOT – \$41.6 M
 - Total - \$44.1 M
- **Schedule**
 - Design Begins – Summer 2017
 - Land Acquisition Begins – Summer 2017
 - Construction Begins – Spring 2019
 - Construction Ends – Winter 2020

LAND ACQUISITION

SPRINGFIELD



RAIL IMPROVEMENTS PROJECT

LAND ACQUISITION ASSISTANCE

- **Rail Relocation Ombudsman**

- **Contact Information:**

Ms. Eve Blackwell-Lewis

Phone: 217-685-4817

Email: 4railhelp@gmail.com

REMAINING GRADE SEPARATIONS

- **Ash Street**
- **Laurel Street**
- **Jefferson Street**
- **Madison Street**
- **North Grand Avenue**
- **North Grand Avenue Overpass**
- **South Grand at 19th Street**
- **Ash at 19th Street**



Not Funded

REMAINING USABLE SEGMENTS

- Usable Segment I – Carpenter Street Underpass
- Usable Segment II – Laurel & Ash Streets Underpasses
- Usable Segment IV – New Bridges at existing Fifth & Sixth Street Underpasses
- Usable Segment III – Madison & Jefferson Streets Underpasses
- Usable Segment IV – New Bridges at existing Fifth & Sixth Street Underpasses
- Usable Segment V – New Bridges at existing Cook Street & South Grand Avenue
- Usable Segment VI – North Grand Avenue Underpass
- Usable Segment VII – Remainder of RR grading track work & cutover of UP traffic
- Usable Segment VIII – Multimodal Facility, including Amtrak Station
- Usable Segments A, B, C – N. Grand Overpass, 19th & South Grand, 19th & Ash St.

PUBLIC ENGAGEMENT

SPRINGFIELD



RAIL IMPROVEMENTS PROJECT

PUBLIC ENGAGEMENT PROGRAM

- **Vector/FAVOR's Public Engagement Activities**
 - Created and disseminated three newsletters to community members
 - Hosted seven Public Meetings and seven Stakeholder Advisory Group Meetings
 - Present Updates at bi-monthly Steering Committee Meetings
 - Prepare media briefings and press advisories
 - Update project website
 - Respond to public correspondence
 - Maintain kiosks at the Community Relations Building and Lincoln Library
 - Offer IDOT Career Training Orientations

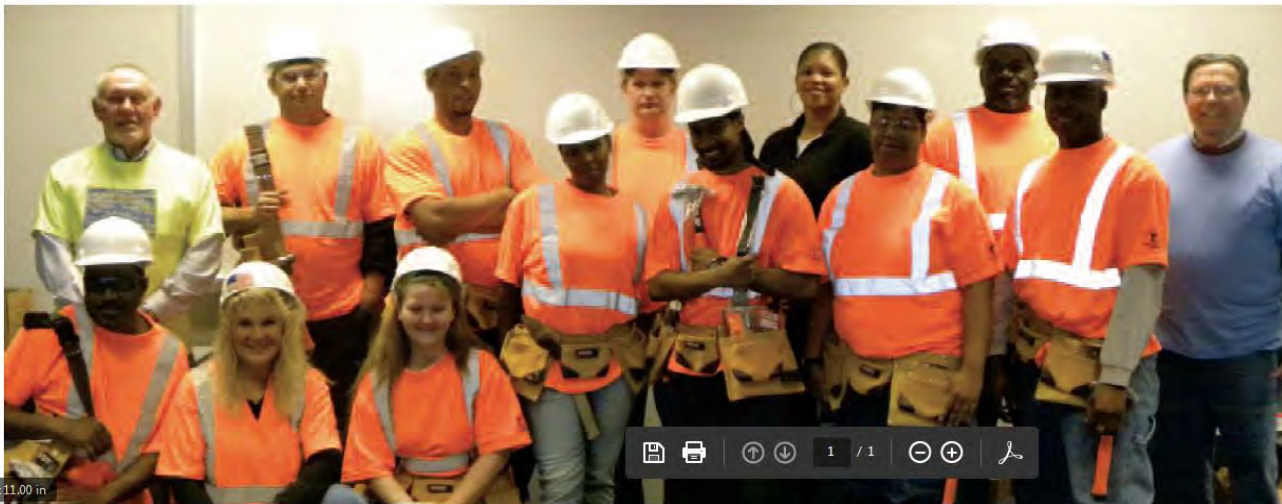


SPRINGFIELD RAIL IMPROVEMENTS PROJECT

IDOT Highway Construction Careers Program

HCCTP News

HIGHWAY CONSTRUCTION CAREERS TRAINING PROGRAM



CONSTRUCTION COURSES OFFERED IN VARIOUS SKILLS:

- O.S.H.A. 10 Hour Safety
- First Aid/CPR/AED
- Aerial Lift
- Fork Lift
- Mobile Crane
- Crane Signaling
- Skid Steer

SPRINGFIELD RAIL IMPROVEMENTS PROJECT

PROJECT CONTACT INFORMATION

PROJECT FACT SHEETS

- Springfield's Office of Community Relations
1450 Groth Street
- Lincoln Library
326 South 7th Street

COMMUNITY OUTREACH

Lesa Branham – 415-8083

LAND ACQUISITION

Jimmie Austin – 747-9257

WEBSITE: www.springfieldrailroad.com

EMAIL: info@springfieldrailroad.com

SPRINGFIELD RAIL IMPROVEMENTS PROJECT

COMMUNITY / STAKEHOLDER PRESENTATIONS

ORGANIZATION	DATE	MEETING TYPE
Stakeholder Advisory Group Meeting	11/10/15	Stakeholder Briefing
Public Informational Meeting	2/11/16	Community Presentation
Minority Contractor's Association	3/17/16	Community Presentation
Stakeholder Advisory Group Meeting	5/19/16	Stakeholder Briefing
Illinois School Board Meeting	6/16/16	Community Presentation
Public Informational Meeting	8/4/16	Community Presentation
Illinois Association of County Engineers	9/29/16	Community Presentation
Stakeholder Advisory Group Meeting	11/10/16	Stakeholder Briefing
Kiwanis Club - Springfield	1/11/17	Community Presentation
Kiwanis Club - Jacksonville	3/23/17	Community Presentation

SPRINGFIELD RAIL IMPROVEMENTS PROJECT

PROJECT NEWSLETTER / WEBSITE



Project News

February 2016 - Issue #3

IN THIS ISSUE

- 1 Carpenter Street Update
- 1 Next Construction Segment
- 2 Archaeological Site Findings
- 2 Project Funding Status
- 2 Land Acquisition
- 3 Minority Participation
- 3 Project Resource Center
- 3 Other Rail Project Updates
- 4 Public Open Houses

Carpenter Street Update

The Carpenter Street Underpass Project is the first funded usable segment of the Springfield Rail Improvements Project and is a recipient of a 2013 U.S. Department of Transportation, Transportation Investment Generating Economic Recovery (TIGER) Grant. The project is intended to reduce congestion, improve safety and provide improved access to area hospitals from locations east of 11th Street.



Work on the Carpenter Street Underpass began in September of 2014. The contractor has completed all of the foundation work for the bridge and walls, completed the Norfolk Southern and Union Pacific bridges, and begun excavation for the underpass roadway. Next steps are to complete excavation work and building walls. Construction is on schedule, on budget and is anticipated to be completed in the summer of 2016. The project's National Environmental Policy Act (NEPA) Record of Decision (ROD) includes a commitment for continuing coordination between Federal Railroad Administration (FRA) and the Illinois Historic Preservation Agency for the evaluation of potential archaeological resources within the project area. (Learn more about the archaeological site on Page 2.)

Next Construction Segment

Usable Segment II is the next rail piece of the Springfield Rail Improvements Project that is scheduled for construction. This segment will consist of constructing new underpasses at Ash and Laurel Streets in the 10th Street corridor. It will also include construction of railroad embankment, drainage, and track from South Grand Avenue to south of Ash Street. Construction will be staged to allow either Ash Street or Laurel Street to remain open at all times.

Design plans for this portion of the project are nearing completion. The City is continuing to work with state and federal representatives to identify the necessary funding to move this segment forward. The City will proceed with the purchase of residential property for Usable Segment II once the funding agreement is in place.

PUBLIC OPEN HOUSE

Thursday, February 11, 2016
4:00 p.m. - 7:00 p.m.

Come anytime, there is no formal presentation. This open house is the next in a regular series of meetings to keep the public informed of the project's progress. A station for written public comments will be provided throughout the event. An open microphone will be available from 6:00 to 7:00 p.m. for verbal public comments.

Prairie Capital Convention Center*
1 Convention Center Plaza
Springfield, IL 62701

*This facility is ADA accessible.

For More Information

VISIT: www.springfieldrailroad.com / EMAIL: info@springfieldrailroad.com / CALL: 217-788-2450



Springfield Rail Improvements Project

[Home](#) [Project Overview](#) [Get Involved](#) [Newsletters](#) [Resource Center](#) [Contact Us](#) [In The News](#) [Archaeological Site](#) [Maps](#)



• [Home](#)

• [About The Project](#)

• [Project Overview](#)
[Project Team](#)

• [Glossary of Terms](#)

• [Get Involved](#)

• [Stakeholder Advisory Group](#)
[Project Presentations](#)
[Public Open House](#)

• [Project Documents](#)

• [Project Newsletter #1](#)
[Project Newsletter #2](#)
[Project Newsletter #3](#)

• [Other Springfield Rail Projects](#)

• [Links](#)

• [Resource Center](#)

• [Frequently Asked Questions](#)
[Workforce Diversity](#)

Springfield Rail Improvements Project

Welcome to the Springfield Rail Improvements Project website! The City of Springfield is leading this rail consolidation effort in cooperation with Sangamon County and the Illinois Department of Transportation (IDOT). This project will relocate all passenger and freight traffic from the Third Street corridor to Tenth Street; construct roadway underpasses at critical rail crossings on both the Tenth and Nineteenth Street corridors; and eliminate train horns in the City between Stanford Avenue and Sangamon Avenue.

This project is being conducted in segments with a focus on planning and design, land acquisition, and eventually construction. While IDOT has provided funding for planning and design, land acquisition and construction will take place as funding becomes available.

Everything you need to know about this project – its goals and ways to get involved and give your input – can be found on this website. Visit often for the latest updates and/or sign up to receive periodic email notifications.

SPRINGFIELD RAIL IMPROVEMENTS PROJECT

PROGRESS UPDATE - MARCH 2016

• The first segment of the project – The Carpenter

View Open House Materials



See Live Views of the
Carpenter Street
Underpass Construction



Time Lapse Video



SPRINGFIELD RAIL IMPROVEMENTS PROJECT

PUBLIC MEETING – FEBRUARY 15, 2018



SPRINGFIELD RAIL IMPROVEMENTS PROJECT

SPRINGFIELD'S
**GROW
OUR OWN**

MINORITY PARTICIPATION PROGRAM

EMPOWERING THE YOUTH OF TODAY WITH THE PROMISE OF TOMORROW



The City of Springfield, Sangamon County and Hanson Professional Services Inc. are entering their fifth year of the Grow Our Own Minority Participation Program.

Through this program, the young talents of our city take part in great learning opportunities for brighter futures within our community.



Currently seeking student referrals

Visit www.growourown.net for details

SPRINGFIELD RAIL IMPROVEMENTS PROJECT

Grow Our Own *Minority Participation Program*

[Home](#)[About
The Program](#) ▾[Get Involved](#)[Program Documents](#) ▾[Links](#)[Contact Us](#)

· In The News

- Illinois PE's Firm Seeks To Diversify
- Officials Announce Details Of Plan
- Springfield Program To Promote Engineering
- Minority STEM Program Successful

"This program is a good demonstration of what we can accomplish if we work together modestly to achieve a goal."

— Andy Van Meter, Sangamon County Board Chairman

Receive Email Updates



U of I Engineering Open House - 2018



SPRINGFIELD RAIL IMPROVEMENTS PROJECT

Michigan Tech Rail & Intermodal Summer Camp Program - 2018

JOIN US FOR A FANTASTIC WEEKLONG EXPLORATION!

Rail and Intermodal Transportation explorations all week long, including hands-on and classroom activities! Several field visits will give you a first-hand look at the Rail and Intermodal Transportation industry—the people who keep the world on the move. Learn about railroad track structure, railyard operations, how truckers do their work, and many more facets of this fascinating industry, all while staying in the beautiful Lake Superior Region of Michigan, Wisconsin and Minnesota.

SPACE IS LIMITED SIGN UP EARLY!

Application Deadline: May 1st | Scholarships Available

Information and Applications are now available online at: <http://syp.mtu.edu>.

WWW.SYP.MTU.EDU/DOCS/RAIL_APP_2018.PDF



Halvor Lines



COMMON FIELD VISITS INCLUDE:

BNSF's Superior Yard, Yardmaster's Office and Repair Shops

LS&I's Eagle Mills Yard, Dispatching and Maintenance Facilities

CLEVELAND-CLIFF's Tilden Mine Train Loading Facilities

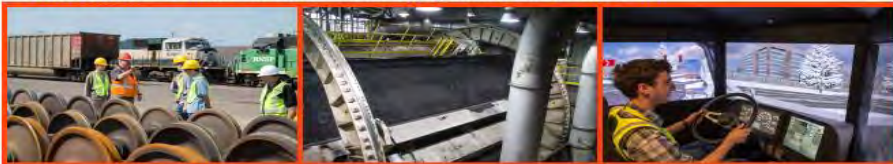
HALVOR LINES's Superior Terminal, Offices and Truck Simulator

NORTH SHORE SCENIC RAILROAD

and **LAKE SUPERIOR RAILROAD MUSEUM**

DTE's Superior Midwest Energy Terminal, including their rotary dumper

QUINCY MINE's Historic Railroad and Mining operations in Hancock, MI



GENEROUSLY SPONSORED BY:



Michigan Tech
Transportation Institute



QUESTIONS? CONTACT US! David Nelson | dannelso@mtu.edu | 906-487-1734 | www.rail.mtu.edu



9TH ANNUAL Summer Youth Program:

Rail & Intermodal Transportation

JULY 8-14, 2018

FOR STUDENTS ENTERING
GRADES 9-12

HOSTED BY:



Rail Transportation Program
Michigan Tech Transportation Institute • Michigan Technological University

UNIVERSITY of WISCONSIN
Superior



SPRINGFIELD RAIL IMPROVEMENTS PROJECT

Michigan Tech Rail & Intermodal Summer Camp Program - 2018

➤ **Zaire Harris**

➤ **Jacquez Stewart**

SPRINGFIELD RAIL IMPROVEMENTS PROJECT

Hanson's Summer Internship Program - 2018



SPRINGFIELD RAIL IMPROVEMENTS PROJECT

Hanson's Summer Internship Program - 2018

- **Christian Moore**
- **Alex Diop**
- **Christina Thomas**
- **Zaire Harris**

SPRINGFIELD RAIL IMPROVEMENTS PROJECT



Shadow Hanson!

Civil, Mechanical, Electrical, Structural & Geotechnical Engineering

Biology Water Resources Surveying Building
Environmental Science Energy and Industry Telecommunications

November 3, 2017

Memorial Center for Learning and Innovation, Room 2A

You can build a great career by building railway and transportation systems, highways, bridges, airports, structures and more! Shadow Hanson is your chance to learn about jobs in engineering and the experiences of Hanson team members. This year's event will feature a "How We Built It" overview of the Springfield Rail Corridor project and a tour of the Memorial Center for Learning and Innovation from "The Engineer's Perspective." Students who have a passion for math, science or engineering are encouraged to attend!

AGENDA

9:15 - 9:45
10:00 - 11:30
11:30 - 11:45
11:45 - 12:30
12:30-1:00
1:00-1:30
1:30

Arrival/Breakfast
How We Built It: Insights into Engineering
Tour of MCL: The Engineer's Perspective
Hands-on Demonstrations
Boxed Lunch
Behind the Scenes Discussion Panel
Departure





WELCOME

Shadow Hanson Day

Shadow Hanson Day provides high school students with an opportunity to experience the work of a professional in the field.



OTHER SPRINGFIELD RAIL PROJECTS

SPRINGFIELD



RAIL IMPROVEMENTS PROJECT

ASSOCIATED SPRINGFIELD RAIL PROJECTS

- **Third Street Improvements** – construct safety improvements including fencing, bridges, and roadway improvements through the summer of 2018.

THANK YOU

SPRINGFIELD



RAIL IMPROVEMENTS PROJECT